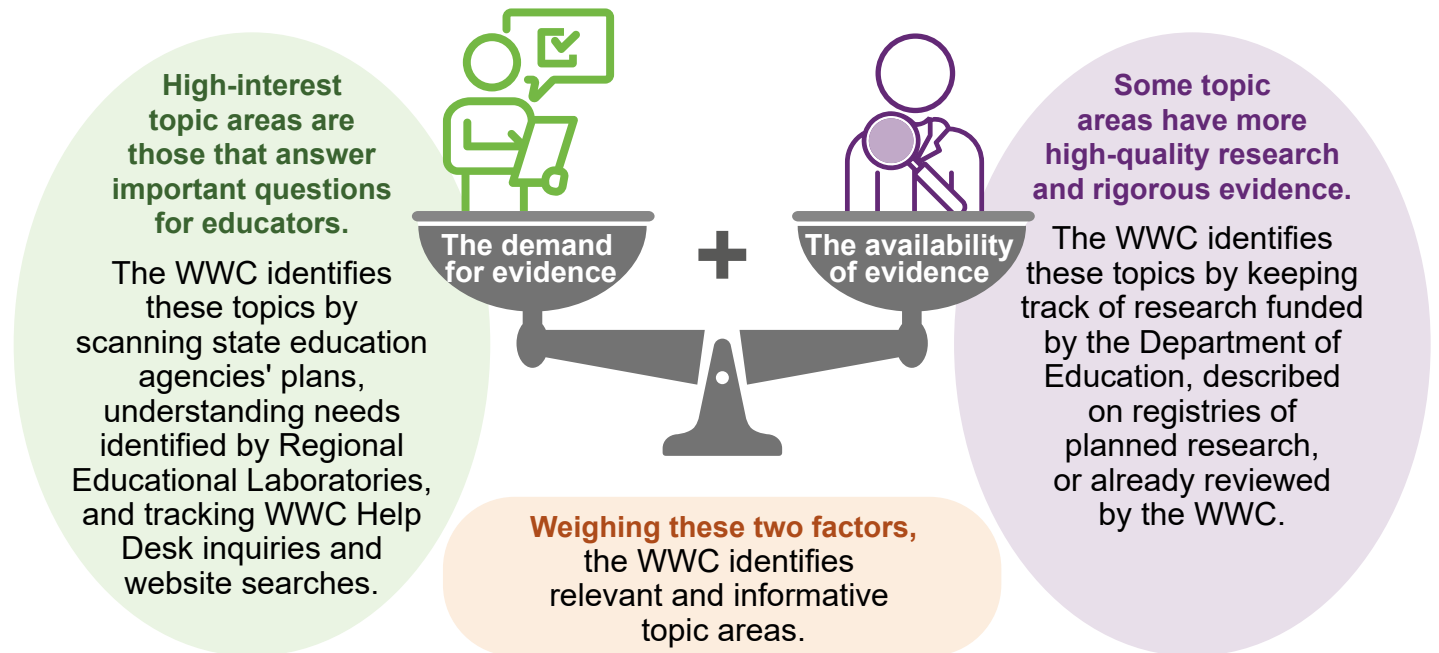







# HOW DOES THE WWC SELECT INTERVENTIONS TO REVIEW?

The What Works Clearinghouse (WWC) summarizes research on education interventions that teachers, school leaders, and other education consumers may use. The WWC chooses interventions to review from timely and relevant **topic areas**, which are broad areas of educational focus, such as literacy or STEM.

**The WWC first identifies topic areas by weighing whether new evidence is in high demand AND available.**

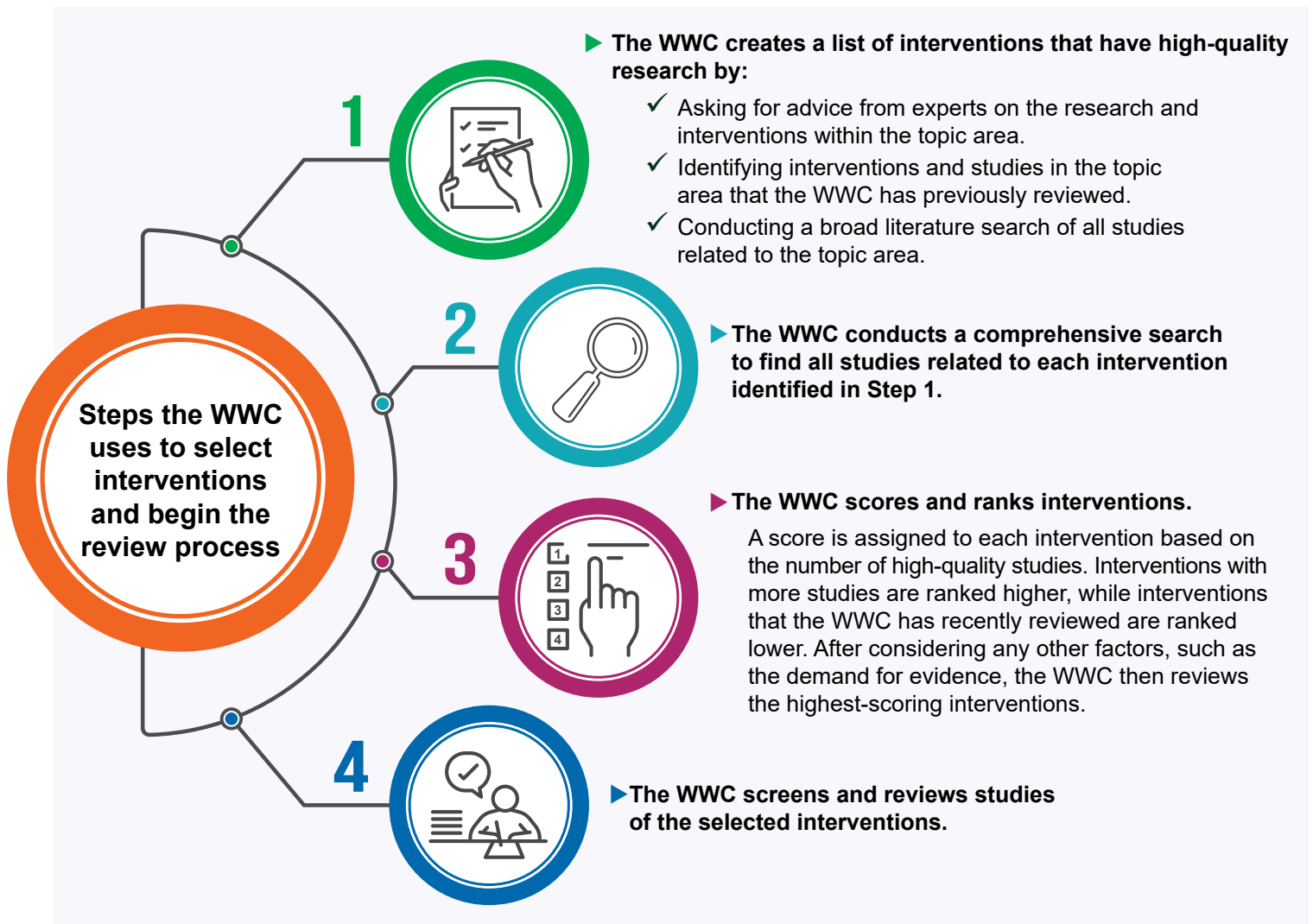


**The WWC is currently reviewing interventions from early childhood to grade 12 in five topic areas:**

				
<b>Educator Excellence and School Leadership</b> Providing effective training and support for teachers and school leaders	<b>English Learners</b> Improving the English-language literacy and academic achievement of English learners	<b>Literacy</b> Increasing the reading and writing skills of beginning readers and adolescents	<b>STEM</b> Improving student outcomes in science and mathematics	<b>Supportive Learning Environments</b> Improving schools' climate and learning environment to help all students succeed

In the future, the WWC will review interventions in additional topic areas that are timely, relevant, and of interest to users of the WWC.

## How does the WWC select interventions to review in each topic area?



See the [WWC Process Briefs](#) for more information about how studies are screened and reviewed by the WWC.



The WWC reviews studies using the WWC evidence standards and summarizes the results of those reviews in intervention reports. See this [infographic](#) for more information about the systematic review process. Also, see this [infographic](#) for more information about how the WWC summarizes evidence within topic areas.