

# HOW DOES THE WWC SUMMARIZE EVIDENCE IN TOPIC AREAS?

The What Works Clearinghouse (WWC) reviews and summarizes research within timely and relevant **topic areas**, which are broad areas of educational focus, such as literacy or STEM.



**Topic areas focus the reviews** on the effectiveness of interventions for certain students or on specific outcomes that best reflect student learning.



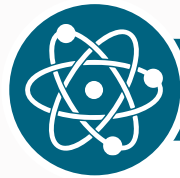
**Topic areas make it easy to find information** on the WWC website using the [Find What Works](#) resource or to locate [intervention reports](#) by topic.

## What are the WWC topic areas in early education to high school?



### Literacy

Increasing the reading and writing skills of beginning readers and adolescents



### STEM

Improving student outcomes in science and mathematics



### Educator Excellence and School Leadership

Providing effective training and support for teachers and school leaders



### English Learners

Improving the English-language literacy and academic achievement of English learners



### Early Childhood

Supporting the growth and development of young children



### Supportive Learning Environments

Improving schools' climate and learning environment to help all students succeed



### School Choice

Providing families more options in education to fit their needs



### Dropout Prevention

Helping students to complete high school

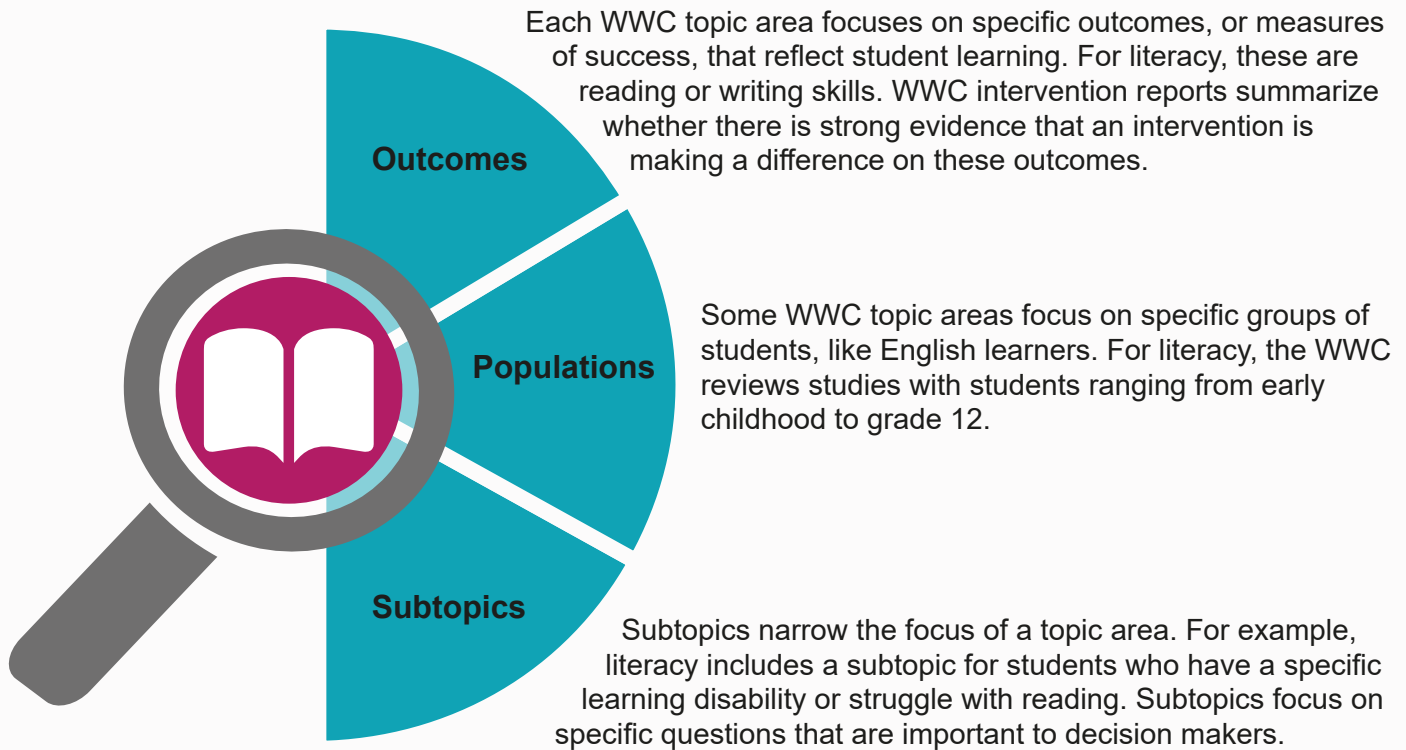


### Supporting Children with Developmental Disabilities

Improving outcomes for children with autism spectrum disorder or intellectual disabilities

---

## What's inside a WWC topic area?



---

## How does the WWC summarize evidence within topic areas?

