

REL Appalachia at SRI International

From the Desk of the REL Appalachia Director

We are currently living in a complex time — our communities are experiencing multiple collective traumas, beyond the day-to-day, which now include a global pandemic and civil unrest sparked by injustice. Communities of color are disproportionately impacted by both, and our education system, at every level — from state agencies, district leaders, teachers, down to families and students — is having to adjust to a new set of norms and circumstances, impacting the way we work and what we prioritize.

Given this massive shift, we remember Maslow’s hierarchy of needs and are reminded of the importance of meeting basic needs (e.g., food, shelter, safety) before learning can occur. Since socioeconomic disruption impacts the fulfillment of basic needs, the complexity of the current moment has implications for our work with students and adult learners as well as professional learning. REL Appalachia stands ready to support you as you shift focus and prioritize safety, care, and connection. Connect with us via our [website](#), [Ask A REL](#), [Twitter](#), or at rel.appalachia@sri.com.

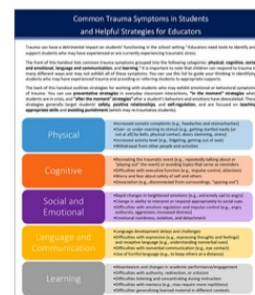
Sincerely,

Deborah Jonas
Director, REL Appalachia

Featured Story

Supporting Students Experiencing Trauma

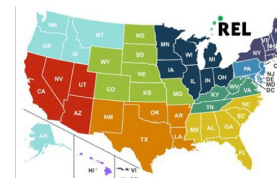
Many students and families are experiencing new traumas, compounded by new and old factors such as neglect, abuse, and isolation; at the same time, educators’ ability to support their students is more limited now that school buildings are closed. REL Appalachia has put together a [blog post](#) with specific guidance for educators on supporting students experiencing trauma.



REL and Partner Resources

REL Resource Corner

Check out resources from across the REL program on addressing student and educator trauma in [our latest REL Corner](#).



REL Appalachia
relappalachia@sri.com

Independent, unbiased research support for your education priorities

This newsletter was prepared under Contract No. ED-IES-17-C-0004 by Regional Educational Laboratory Appalachia, administered by SRI International. The content does not necessarily reflect the views or policies of IES or the U.S. Department of Education, nor does mention of trade names, commercial products, or organizations imply endorsement by the U.S. Government.