



## Strengthening Early Education in Schools, Districts, and States: Resources for Families

The ten Regional Educational Laboratories (RELs) have developed resources for families to help them prepare their children to enter elementary school and to support them in the early grades. The resources included here, which are representative of many that have been developed by RELs, address a number of important topics. The resources are in a variety of formats including websites, fact sheets, activity sheets, videos, blogs, and reports. To access resources from any of the ten RELs, go to <https://ies.ed.gov/ncee/edlabs>.

### Setting Your Children Up for Success in School

Attending school is an important milestone in the lives of children and their families. These resources provide guidance for families that will help them support their pre-kindergartener and kindergartener's learning and development at home, and recognize the importance of good attendance. Support from families will help ensure children are successful in school.



[Tips for Supporting PreK and K Learning at Home](#)  
(REL Mid-Atlantic) *Fact Sheet*



[Attendance in PreK and Kindergarten Spells Future Success](#)  
(REL Mid-Atlantic) *Infographic*



### Supporting Your Children's Literacy Development

It is never too soon to start supporting children in learning to love reading. RELs have developed numerous resources that support families as their children build foundational literacy skills at home.



[Supporting Your Child's Reading at Home](#) (REL Southeast) *Website*



[Tips for Supporting Elementary Writing Skills at Home](#)  
(REL Mid-Atlantic) *Fact Sheet*



[Joyful Reading Webinar Series](#) (REL West) *Webinar Series*



[Supporting Young English Learners at Home](#) (RELs West, Northwest, and Northeast & Islands) *Activity Sheets*



## Supporting Your Children's Mathematics Development

Young learners can develop mathematical skills that will serve as the foundation for their future learning as they progress through school. RELs have developed several products that may help families support their children as they develop mathematical skills they will build on as they move through the elementary grades.



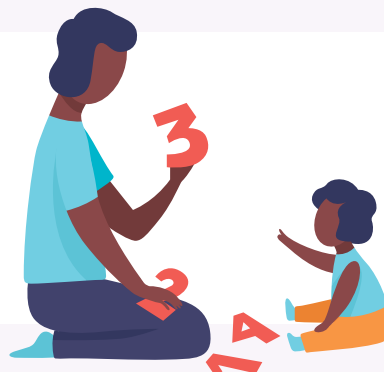
[Teaching Math to Young Children for Families and Caregivers](#) (REL Central, REL Appalachia, REL Northwest) *Website*



[Two Strategies to Help Your Child Learn to Love Math](#) (REL Northwest) *Video*



[Family and Caregiver Activity to Support Young Math Learners' Understanding of Fractions](#) (REL West) *Activity Sheet*



## Integrating Learning and Play

Families should feel confident they are helping their children learn while they play together, and that children can learn through play at school. In addition, a play-based approach may benefit children's well-being. Although these REL products are designed for educators, families may enjoy exploring how play can support learning in classrooms and at home.



[Play as a Teaching Strategy for Children in Pre-Kindergarten to Grade 3: Findings from the Evidence Review](#) (REL Mid-Atlantic) *Report*



[Kindergarten: Where Play and Learning Can Meet](#) (REL Midwest) *Video*



[Integrating Play into Literacy Instruction: Strategies for your Classroom](#) (REL Midwest) *Video*



[Integrating Play into Literacy Instruction: Interview with Tim Shanahan](#) (REL Midwest) *Video*



[Play and Learn: Effectiveness of Play as a Teaching Strategy in the Early Grades](#) (REL Mid-Atlantic) *Blog*



This infographic was developed by the cross-REL working group focused on school readiness and early education, and is one of three in a series developed for educational leaders, educators, and families. The other two infographics in the series may be accessed here:

- [Strengthening Early Education in Schools, Districts and States: Resources for Educational Leaders](#)
- [Strengthening Early Education in Schools, Districts and States: Resources for Educators](#)

This infographic was prepared for the Institute of Education Sciences (IES) under Contract ED-IES-17-C-0011 by Regional Educational Laboratory (REL) Southeast at FSU. The content of the publication does not necessarily reflect the views or policies of IES or the U.S. Department of Education, nor does mention of trade names, commercial products, or organizations imply endorsement by the U.S. Government.