

Public School State Snapshot: **Arizona**

Number of public schools¹ » 2,414

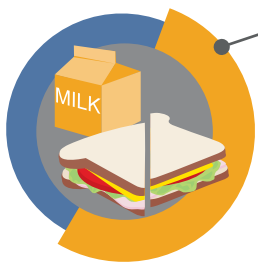
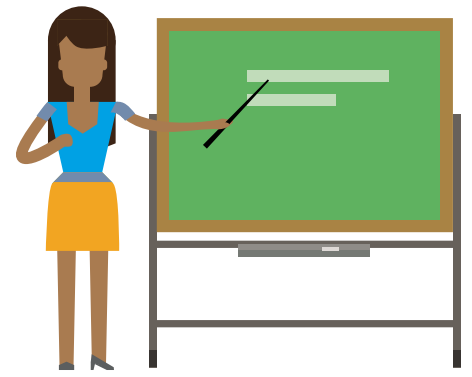


25% are charter schools

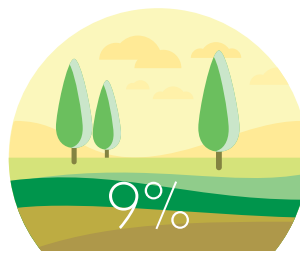


Number of students²
1,111,695

Number of teachers (FTE)³
48,125



Students eligible for free/reduced price lunch⁴
53%



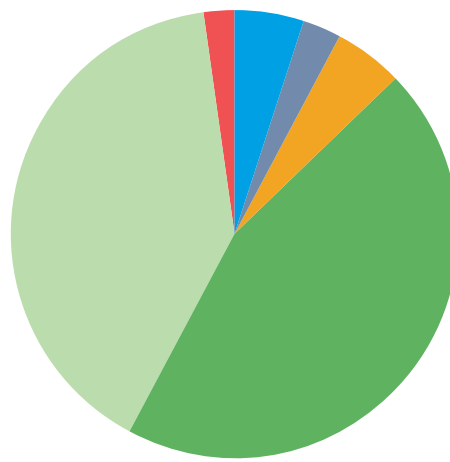
9%
Students living in rural areas⁵



Students with IEPs⁶
12%

Race/ethnicity breakdown⁷

● AMERICAN INDIAN/ALASKA NATIVE	5%
● ASIAN OR ASIAN/PACIFIC ISLANDER	3%
● BLACK	5%
● HISPANIC	45%
● TWO OR MORE RACES	2%
● WHITE	40%



ELL/LEP students⁸
6%



19%

4-year-olds enrolled in a publicly funded preschool program⁹

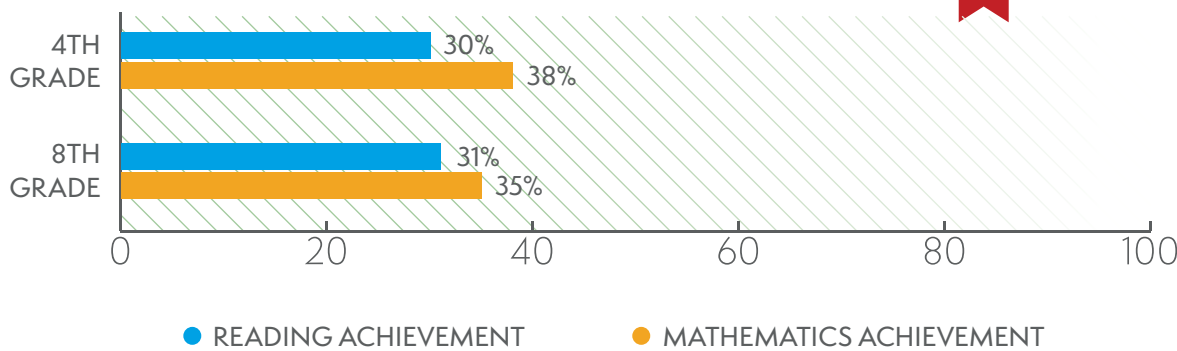


77%
High school graduation rate¹⁰



39%
Percentage of 18- to 24-year-olds enrolled in degree-granting postsecondary institutions¹¹

Students achieving at or above proficient¹²



@REL_West

<https://ies.ed.gov/ncee/edlabs/regions/west/index.asp>

relwest@WestEd.org

¹ U.S. Department of Education, National Center for Education Statistics. Common Core of Data (CCD), "Local Education Agency (School District) Universe Survey Membership Data," 2014-15, v.1a; "Public Elementary/Secondary School Universe Survey Directory Data," 2014-15, v.1a; "State Nonfiscal Public Elementary/Secondary Education Survey Directory Data," 2014-15, v.1a.
² U.S. Department of Education, National Center for Education Statistics. Common Core of Data (CCD), "State Nonfiscal Public Elementary/Secondary Education Survey Membership Data," 2014-15, v.1a. <https://nces.ed.gov/ccd/elsi/tableGenerator.aspx>
³ U.S. Department of Education, National Center for Education Statistics. Common Core of Data (CCD), "State Nonfiscal Public Elementary/Secondary Education Survey Staff Data," 2014-15, v.1a. <https://nces.ed.gov/ccd/elsi/tableGenerator.aspx>
⁴ U.S. Department of Education, National Center for Education Statistics. Common Core of Data (CCD), "Public Elementary/Secondary School Universe Survey," 2000-01, 2010-11, 2012-13, and 2013-14. https://nces.ed.gov/programs/digest/d15/tables/dt15_204.10.asp?current=yes
⁵ U.S. Department of Education, National Center for Education Statistics. Common Core of Data (CCD), "Public Elementary/Secondary School Universe Survey," 2013-14, v.1a. https://nces.ed.gov/surveys/ruraled/tables/A.1.a-3_2.asp?refer=
⁶ U.S. Department of Education, National Center for Education Statistics. Common Core of Data (CCD), "Local Education Agency (School District) Universe Survey Special ED Data," 2014-15, v.1a. <https://nces.ed.gov/ccd/elsi/tableGenerator.aspx>
⁷ U.S. Department of Education, National Center for Education Statistics. Common Core of Data (CCD), "State Nonfiscal Public Elementary/Secondary Education Survey Membership Data," 2014-15, v.1a. https://nces.ed.gov/programs/digest/d16/tables/dt16_203.70.asp?current=yes
⁸ U.S. Department of Education, National Center for Education Statistics. Common Core of Data (CCD), "Local Education Agency (School District) Universe Survey LEP Data," 2014-15, v.1a. <https://nces.ed.gov/ccd/elsi/tableGenerator.aspx>
⁹ U.S. Department of Education. (2015). A matter of equity: Preschool in America. <https://www2.ed.gov/documents/early-learning/matter-equity-preschool-america.pdf>
¹⁰ ED Facts Data Groups 695 and 696, School year 2014-15. https://nces.ed.gov/ccd/tables/ACGR_RE_and_characteristics_2014-15.asp
¹¹ U.S. Department of Commerce, Census Bureau, American Community Survey (ACS), 2014. https://nces.ed.gov/programs/digest/d15/tables/dt15_302.65.asp?current=yes
¹² U.S. Department of Education, National Center for Education Statistics. National Assessment of Educational Progress (NAEP), 2015. https://nces.ed.gov/programs/digest/d15/tables/dt15_221.40.asp

Public School State Snapshot: California

Number of public schools¹ » 10,508

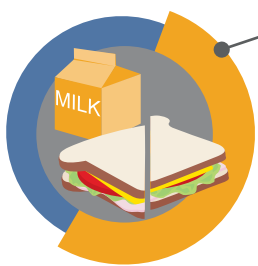
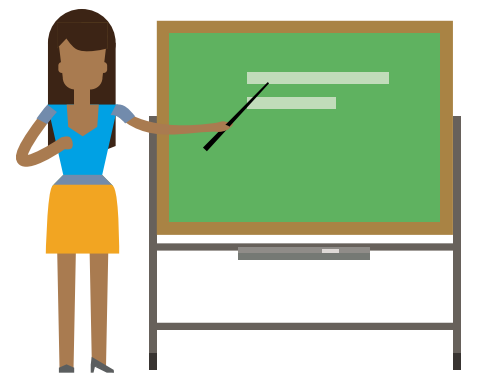


11% are charter schools

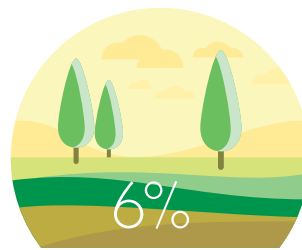


Number of students²
6,312,161

Number of teachers (FTE)³
267,685



Students eligible for free/reduced price lunch⁴
58%



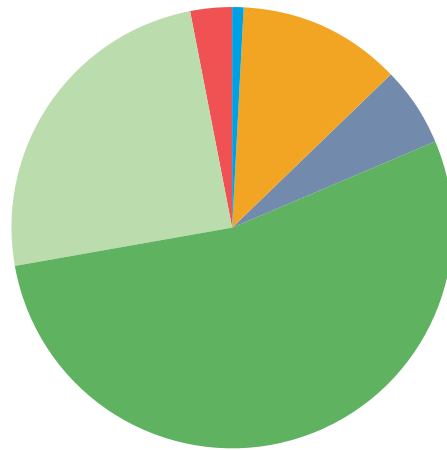
6%
Students living in rural areas⁵



Students with IEPs⁶
11%

Race/ethnicity breakdown⁷

AMERICAN INDIAN/ALASKA NATIVE	1%
ASIAN OR ASIAN/PACIFIC ISLANDER	12%
BLACK	6%
HISPANIC	54%
TWO OR MORE RACES	3%
WHITE	25%



ELL/LEP students⁸
22%



4-year-olds enrolled in a publicly funded preschool program⁹

29%



82%

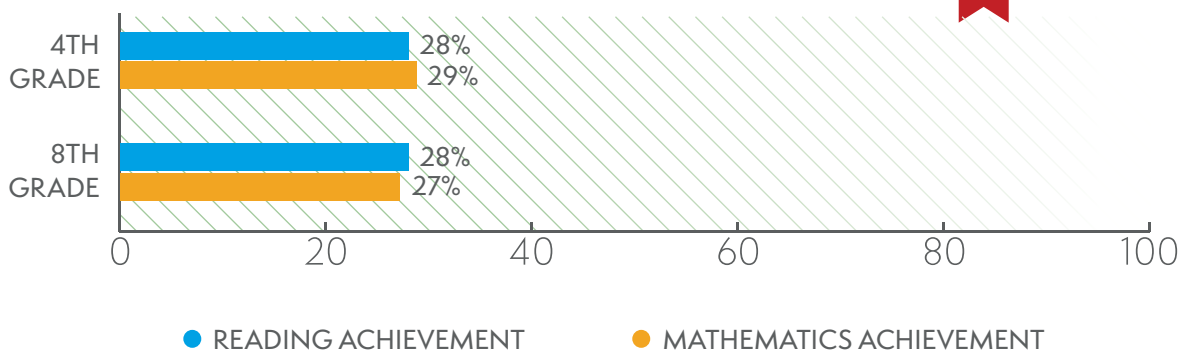
High school graduation rate¹⁰



46%

Percentage of 18- to 24-year-olds enrolled in degree-granting postsecondary institutions¹¹

Students achieving at or above proficient¹²



@REL_West

<https://ies.ed.gov/ncee/edlabs/regions/west/index.asp>

relwest@WestEd.org

¹ U.S. Department of Education, National Center for Education Statistics. Common Core of Data (CCD), "Local Education Agency (School District) Universe Survey Membership Data," 2014-15, v.1a; "Public Elementary/Secondary School Universe Survey Directory Data," 2014-15, v.1a; "State Nonfiscal Public Elementary/Secondary Education Survey Directory Data," 2014-15, v.1a.
² U.S. Department of Education, National Center for Education Statistics. Common Core of Data (CCD), "State Nonfiscal Public Elementary/Secondary Education Survey Membership Data," 2014-15, v.1a. <https://nces.ed.gov/ccd/elsi/tableGenerator.aspx>
³ U.S. Department of Education, National Center for Education Statistics. Common Core of Data (CCD), "State Nonfiscal Public Elementary/Secondary Education Survey Staff Data," 2014-15, v.1a. <https://nces.ed.gov/ccd/elsi/tableGenerator.aspx>
⁴ U.S. Department of Education, National Center for Education Statistics. Common Core of Data (CCD), "Public Elementary/Secondary School Universe Survey," 2000-01, 2010-11, 2012-13, and 2013-14. https://nces.ed.gov/programs/digest/d15/tables/dt15_204.10.asp?current=yes
⁵ U.S. Department of Education, National Center for Education Statistics. Common Core of Data (CCD), "Public Elementary/Secondary School Universe Survey," 2013-14, v.1a. https://nces.ed.gov/surveys/ruraled/tables/A.1.a-3_2.asp?refer=
⁶ U.S. Department of Education, National Center for Education Statistics. Common Core of Data (CCD), "Local Education Agency (School District) Universe Survey Special ED Data," 2014-15, v.1a. <https://nces.ed.gov/ccd/elsi/tableGenerator.aspx>
⁷ U.S. Department of Education, National Center for Education Statistics. Common Core of Data (CCD), "State Nonfiscal Public Elementary/Secondary Education Survey Membership Data," 2014-15, v.1a. https://nces.ed.gov/programs/digest/d16/tables/dt16_203.70.asp?current=yes
⁸ U.S. Department of Education, National Center for Education Statistics. Common Core of Data (CCD), "Local Education Agency (School District) Universe Survey LEP Data," 2014-15, v.1a. <https://nces.ed.gov/ccd/elsi/tableGenerator.aspx>
⁹ U.S. Department of Education. (2015). A matter of equity: Preschool in America. <https://www2.ed.gov/documents/early-learning/matter-equity-preschool-america.pdf>
¹⁰ ED Facts Data Groups 695 and 696, School year 2014-15. https://nces.ed.gov/ccd/tables/ACGR_RE_and_characteristics_2014-15.asp
¹¹ U.S. Department of Commerce, Census Bureau, American Community Survey (ACS), 2014. https://nces.ed.gov/programs/digest/d15/tables/dt15_302.65.asp?current=yes
¹² U.S. Department of Education, National Center for Education Statistics. National Assessment of Educational Progress (NAEP), 2015. https://nces.ed.gov/programs/digest/d15/tables/dt15_221.40.asp

Public School State Snapshot: Nevada

Number of public schools¹ **702**

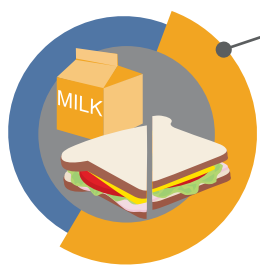
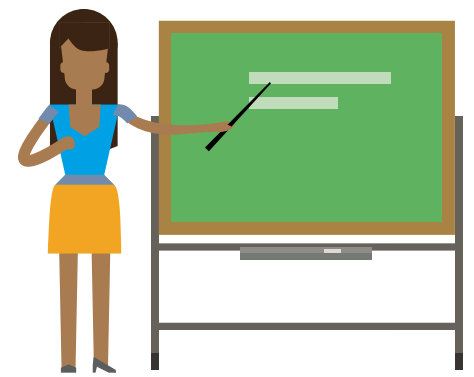


6% are charter schools

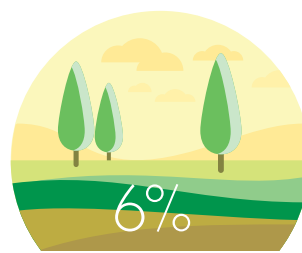


Number of students²
459,189

Number of teachers (FTE)³
21,656



Students eligible for free/reduced price lunch⁴
53%



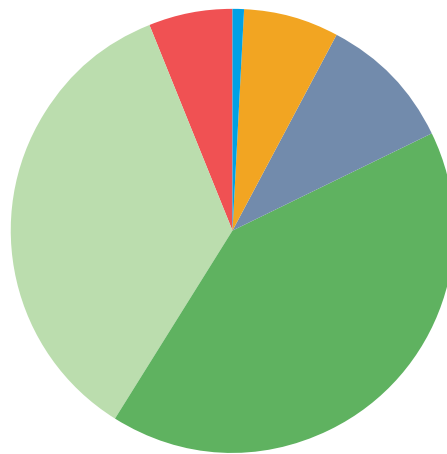
Students living in rural areas⁵
6%



Students with IEPs⁶
12%

Race/ethnicity breakdown⁷

● AMERICAN INDIAN/ALASKA NATIVE	1%
● ASIAN OR ASIAN/PACIFIC ISLANDER	7%
● BLACK	10%
● HISPANIC	41%
● TWO OR MORE RACES	6%
● WHITE	35%



ELL/LEP students⁸
16%



14%

4-year-olds enrolled in a publicly funded preschool program⁹



71%

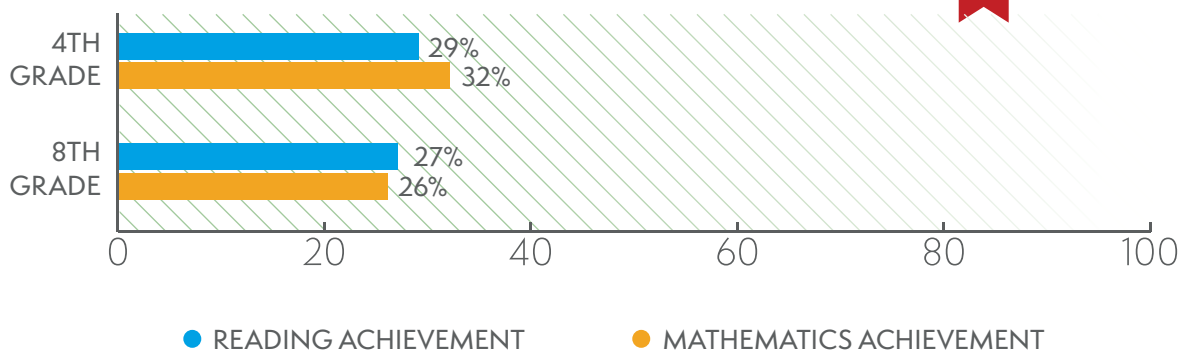
High school graduation rate¹⁰



32%

Percentage of 18- to 24-year-olds enrolled in degree-granting postsecondary institutions¹¹

Students achieving at or above proficient¹²



@REL_West

<https://ies.ed.gov/ncee/edlabs/regions/west/index.asp>

relwest@WestEd.org

¹ U.S. Department of Education, National Center for Education Statistics. Common Core of Data (CCD), "Local Education Agency (School District) Universe Survey Membership Data," 2014-15, v.1a; "Public Elementary/Secondary School Universe Survey Directory Data," 2014-15, v.1a; "State Nonfiscal Public Elementary/Secondary Education Survey Directory Data," 2014-15, v.1a.
² U.S. Department of Education, National Center for Education Statistics. Common Core of Data (CCD), "State Nonfiscal Public Elementary/Secondary Education Survey Membership Data," 2014-15, v.1a. <https://nces.ed.gov/ccd/elsi/tableGenerator.aspx>
³ U.S. Department of Education, National Center for Education Statistics. Common Core of Data (CCD), "State Nonfiscal Public Elementary/Secondary Education Survey Staff Data," 2014-15, v.1a. <https://nces.ed.gov/ccd/elsi/tableGenerator.aspx>
FTE is Full Time Equivalent.
⁴ U.S. Department of Education, National Center for Education Statistics. Common Core of Data (CCD), "Public Elementary/Secondary School Universe Survey," 2000-01, 2010-11, 2012-13, and 2013-14. https://nces.ed.gov/programs/digest/d15/tables/dt15_204.10.asp?current=yes
⁵ U.S. Department of Education, National Center for Education Statistics. Common Core of Data (CCD), "Public Elementary/Secondary School Universe Survey," 2013-14, v.1a. https://nces.ed.gov/surveys/ruraled/tables/A.1.a.-3_2.asp?refer=
⁶ U.S. Department of Education, National Center for Education Statistics. Common Core of Data (CCD), "Local Education Agency (School District) Universe Survey Special ED Data," 2014-15, v.1a. <https://nces.ed.gov/ccd/elsi/tableGenerator.aspx>
IEP is an Individualized Education Plan.
⁷ U.S. Department of Education, National Center for Education Statistics. Common Core of Data (CCD), "State Nonfiscal Public Elementary/Secondary Education Survey Membership Data," 2014-15, v.1a. https://nces.ed.gov/programs/digest/d16/tables/dt16_203.70.asp?current=yes
⁸ U.S. Department of Education, National Center for Education Statistics. Common Core of Data (CCD), "Local Education Agency (School District) Universe Survey LEP Data," 2014-15, v.1a. <https://nces.ed.gov/ccd/elsi/tableGenerator.aspx>
ELLs are English Language Learners. LEPs are Limited English Proficient students.
⁹ U.S. Department of Education. (2015). A matter of equity: Preschool in America. <https://www2.ed.gov/documents/early-learning/matter-equity-preschool-america.pdf>
¹⁰ ED Facts Data Groups 695 a nd 696, School year 2014-15. https://nces.ed.gov/ccd/tables/ACGR_RE_and_characteristics_2014-15.asp
¹¹ U.S. Department of Commerce, Census Bureau, American Community Survey (ACS), 2014. https://nces.ed.gov/programs/digest/d15/tables/dt15_302.65.asp?current=yes
¹² U.S. Department of Education, National Center for Education Statistics. National Assessment of Educational Progress (NAEP), 2015. https://nces.ed.gov/programs/digest/d15/tables/dt15_221.40.asp

