



September 2018, vol.4

## Message From the Director

Message From the Director .....	1
Where in the World is REL Pacific? .....	2
Resources .....	3

Dear Colleagues,

In the last several months, REL Pacific staff have spent a significant amount of time in the region—at conferences, facilitating training and coaching, and conducting needs-sensing. As always, it's a highlight of our work to meet with so many dedicated Pacific Region educators.

In this issue of our newsletter, we highlight our attendance and presentations at the Micronesian Teachers Education Conference (MTEC) in Chuuk, along with several new REL Pacific resources. Please check out our website, and particularly our blog and events calendar, for ongoing updates about our work in the region and upcoming events at <https://ies.ed.gov/ncee/edlabs/regions/pacific/index.asp>.

As always, if you have questions about REL Pacific's work, would like to participate in or help to develop a research-practice partnership, or have suggestions for upcoming newsletters, please feel free to contact me at 808.664.8187, or by email at [pherman@mcREL.org](mailto:pherman@mcREL.org).

Phillip Herman  
 Director, REL Pacific at McREL International

### REL Pacific at McREL International

1003 Bishop Street, Suite 2200  
 Honolulu, HI 96813

[www.mcREL.org](http://www.mcREL.org) • <https://ies.ed.gov/ncee/edlabs/regions/pacific/index.asp>

808.664.8175 • 877.768.9222 (toll free from AS, RMI, and US)





### Learning from Practitioners at the 2018 Micronesia Teachers Education Conference

While students were on summer break in the Federated States of Micronesia (FSM), the national and state departments of education were busy organizing and conducting teacher professional development activities in preparation for the start of the new school year in August.

One much-anticipated annual regional event is the Micronesia Teachers Education Conference (MTEC), which rotates hosts among the four FSM states: Kosrae, Pohnpei, Chuuk, and Yap. This year, MTEC was held at Chuuk High School on the main island of Weno in Chuuk Lagoon. REL Pacific staff traveled to Weno to present at and attend the five-day conference from July 9–13, 2018.

With more than 500 attendees at MTEC this year, many of whom were teachers from the outer islands of Chuuk, concurrent sessions often had more than 30 participants. REL Pacific was among several organizations, colleges, and state agencies to present at the conference throughout the week. REL Pacific staff presented on the following three topics, which are central themes that the Partnerships across the Pacific region addressed over the past year:

- Building better pathways from high school to and through college
- Designing high-quality professional learning for teachers in the FSM
- How REL Pacific supports the work of researcher-practitioner partnerships

MTEC is not only among the largest Pacific-focused education conferences, but is unique in that it is heavily attended by teachers and other practitioners. Because many teachers from the region's outer islands travel by boat to the main islands only once or twice a year for events such as this, the conference is a chance to catch up on the status of current and upcoming education system improvement efforts, and how those efforts affect teachers at the school level.

REL Pacific staff appreciate the opportunity to take part in these large regional conferences to share news from the other Partnerships in the Pacific region and continue to learn from practitioners about ways that REL Pacific's ongoing support at the system level can also better support them in the classrooms.



*This beautiful decorative woven mat and fans were gifted to REL Pacific staff and other presenters from the 2018 MTEC organizing committee in Chuuk State, Federated States of Micronesia.*

3

## Check out REL Pacific's Latest Resources!

### Partnerships and Priorities in the REL Pacific Region: Videos and Infographics



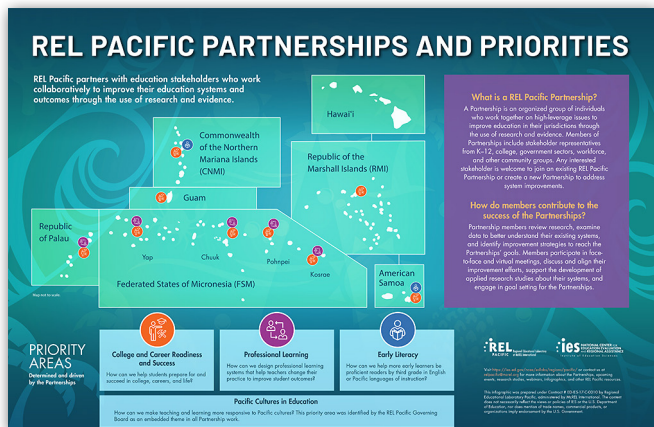
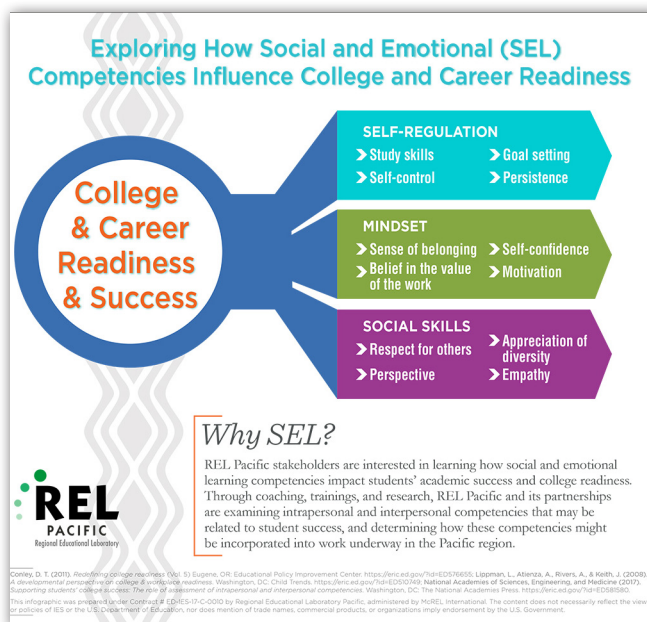
Learn about our Partnerships across the Pacific Region, our work in improvement science, and more, in the latest video from REL Pacific! Our new Partnerships and Priorities video provides an overview of REL Pacific's priority areas, as identified by stakeholders, and a more in-depth look at work underway in the areas of college and career readiness and success and teacher professional learning.

This video is available at: <https://youtu.be/mfalGDPI3c>

Members of Partnerships include stakeholder representatives from K–12, college, government sectors, the workforce, and other community groups.

The *Partnership and Priorities* infographic is available at: [https://ies.ed.gov/ncee/edlabs/infographics/pdf/REL\\_PA\\_Partnerships\\_and\\_Priorities.pdf](https://ies.ed.gov/ncee/edlabs/infographics/pdf/REL_PA_Partnerships_and_Priorities.pdf)

### Exploring how Social and Emotional (SEL) Competencies Influence College and Career Readiness



Learn about REL Pacific's priority areas and the Partnerships that focus on them in our latest infographic! REL Pacific's Partnerships are organized groups of stakeholders who work together on high-leverage issues to improve education in their jurisdictions through the use of research and evidence.

REL Pacific stakeholders are interested in learning how social and emotional learning competencies impact students' academic success and college readiness. Through coaching, trainings, and research, REL Pacific and its partnerships are examining intrapersonal and interpersonal competencies that may be related to student success, and determining how these competencies might be incorporated into work underway in the Pacific region. Check out our SEL infographic to learn more!

The SEL infographic is available at: [https://ies.ed.gov/ncee/edlabs/infographics/pdf/REL\\_PA\\_Exploring\\_How\\_Social\\_and\\_Emotional\\_Competencies\\_Influence\\_College\\_and\\_Career\\_Readiness.pdf](https://ies.ed.gov/ncee/edlabs/infographics/pdf/REL_PA_Exploring_How_Social_and_Emotional_Competencies_Influence_College_and_Career_Readiness.pdf)



### **REL Pacific**

Serving American Samoa,  
Commonwealth of the Northern Mariana Islands,  
Federated States of Micronesia (Chuuk, Kosrae, Pohnpei, and Yap),  
Hawai'i, Republic of the Marshall Islands,  
& Republic of Palau  
(808) 664-8175

<https://ies.ed.gov/ncee/edlabs/regions/pacific/index.asp>

