

# Does That Make Sense?



## Does That Make Sense?

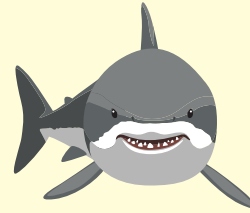
It is important to help children pay attention to what they read and make corrections when words are misread. Ask your child to read the story. When your child misreads a word:

1. Ask, "Does that make sense?"
2. If your child does not know where the error was made, point to the word and ask him/her to read it.
3. If he/she cannot read the word, read the sentence exactly how he/she read it, with the error. Ask, "Does that make sense?"
4. If he/she does not fix the mistake, read the word and ask your child to read the word.
5. Ask your child to read the whole sentence correctly.



## Great White Shark

The great white shark is one of the biggest sharks around. It can grow to be 20 feet long. The great white shark has a white belly and a gray back and lives in most of the oceans in the world.



When they are born, these sharks are about five feet long. They must swim away from their mother or she might eat them!

The great white shark has thousands of teeth. When it loses a tooth, a new one takes its place. It eats meat, including fish, dolphins, seals and sea lions. After a big meal, the shark might not eat again for one or two months. It is the only shark known to lift its head out of the water, maybe to look around and see what it can eat.

The shark must swim all the time, even when sleeping, or it will sink. I don't ever want to meet a great white shark!