

Public School State Snapshot: **Arizona**

Number of public schools¹ **2,330**

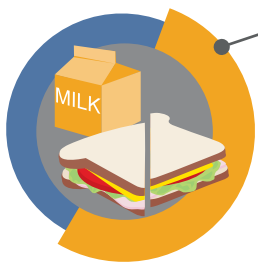
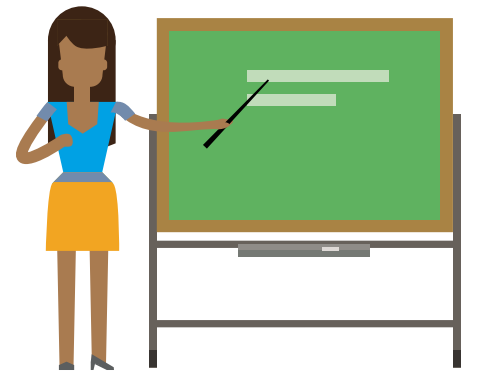


24% are charter schools

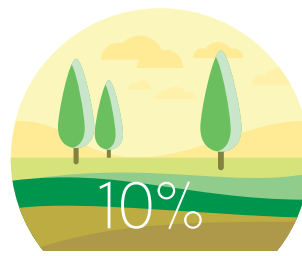


Number of students²
1,106,677

Number of teachers (FTE)³
47,868



Students eligible for free/reduced price lunch⁴
57%



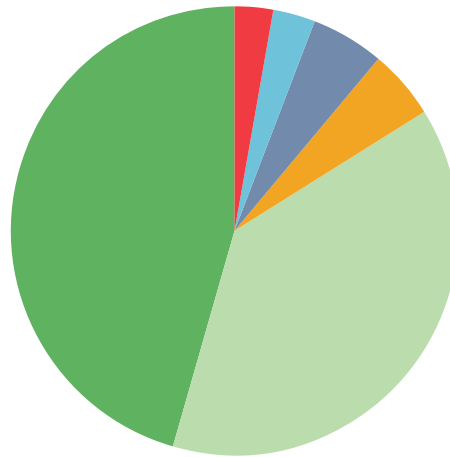
10%
Students living in rural areas⁵



Students with IEPs⁶
13%

Race/ethnicity breakdown⁷

● AMERICAN INDIAN/ALASKA NATIVE	5%
● ASIAN OR ASIAN/PACIFIC ISLANDER	3%
● BLACK	5%
● HISPANIC	45%
● TWO OR MORE RACES	4%
● WHITE	38%



EL students⁸
6%



4-year-olds enrolled in a publicly funded early childhood education program⁹
19%

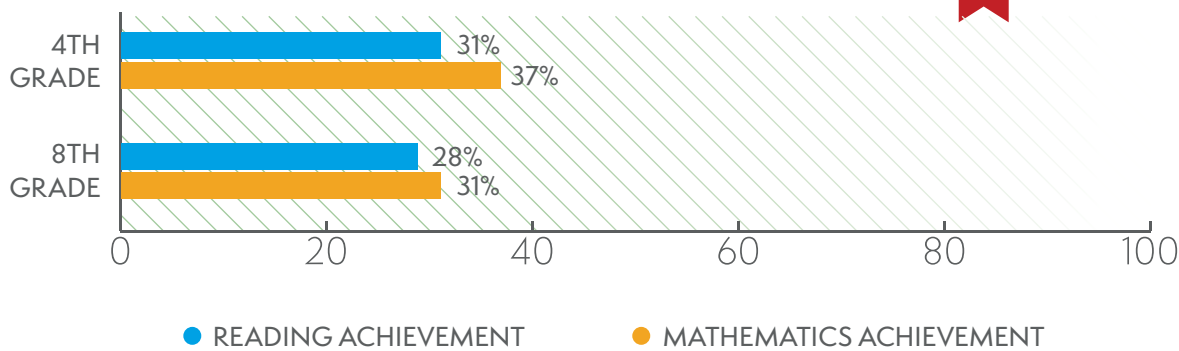


78%
High school graduation rate¹⁰



39%
Percentage of 18- to 24-year-olds enrolled in degree-granting postsecondary institutions¹¹

Students achieving at or above proficient¹²



@REL_West

<https://ies.ed.gov/ncee/edlabs/regions/west/index.asp>

relwest@WestEd.org

¹ U.S. Department of Education, National Center for Education Statistics, Common Core of Data (CCD), "Local Education Agency (School District) Universe Survey", 2017-18 v.1a; "Public Elementary/Secondary School Universe Survey", 2017-18 v.1a; "State Nonfiscal Public Elementary/Secondary Education Survey", 2017-18 v.1a.

² Ibid.

³ Ibid.

⁴ U.S. Department of Education, National Center for Education Statistics, Common Core of Data (CCD), "Public Elementary/Secondary School Universe Survey," 2000-01, 2010-11, 2015-16, and 2016-17.

⁵ U.S. Department of Education, National Center for Education Statistics (NCES), Common Core of Data (CCD), "Public Elementary/Secondary School Universe Survey," Provisional Version 1a, and the NCES Education Demographic and Geographic Estimates (EDGE), "Public Elementary/Secondary School Universe—Geographic Data," 2015-16.

⁶ U.S. Department of Education, National Center for Education Statistics, Common Core of Data (CCD), "State Nonfiscal Survey of Public Elementary/Secondary Education," 2017-18.

⁷ U.S. Department of Education, National Center for Education Statistics, Common Core of Data (CCD), "Public Elementary/Secondary School Universe Survey", 2017-18 v.1a; "State Nonfiscal Public Elementary/Secondary Education Survey", 2017-18 v.1a.

⁸ U.S. Department of Education, National Center for Education Statistics, Common Core of Data (CCD), "Local Education Agency Universe Survey," 2016-17. See Digest of Education Statistics 2018, table 204.20.

⁹ *The State of Preschool 2018, State Preschool Yearbook*. (2019). New Brunswick, NJ: National Institute for Early Education Research.

¹⁰ EDData Groups 695, School year 2016-17 Adjusted Cohort Graduation Rate (ACGR).

¹¹ U.S. Department of Commerce, Census Bureau, American Community Survey (ACS), 2017.

¹² U.S. Department of Education, Institute of Education Sciences, National Center for Education Statistics, National Assessment of Educational Progress (NAEP), 2019 Reading Assessment and 2019 Mathematics Assessment.

Public School State Snapshot: California

Number of public schools¹ » 10,323

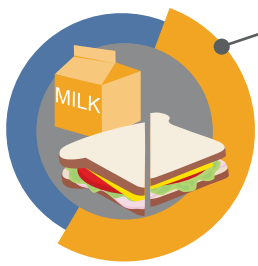
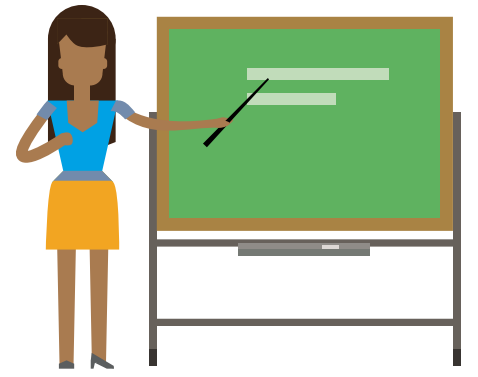


12% are charter schools

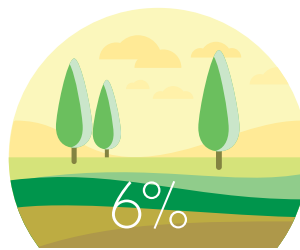


Number of students²
6,206,088

Number of teachers (FTE)³
271,523



Students eligible for free/reduced price lunch⁴
58%



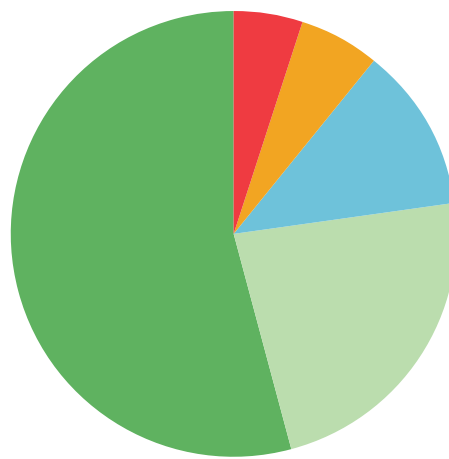
6%
Students living in rural areas⁵



Students with IEPs⁶
12%

Race/ethnicity breakdown⁷

● ASIAN OR ASIAN/PACIFIC ISLANDER	12%
● BLACK	6%
● HISPANIC	54%
● TWO OR MORE RACES	5%
● WHITE	23%



EL students⁸
20%



4-year-olds enrolled in a publicly funded early childhood education program⁹
47%

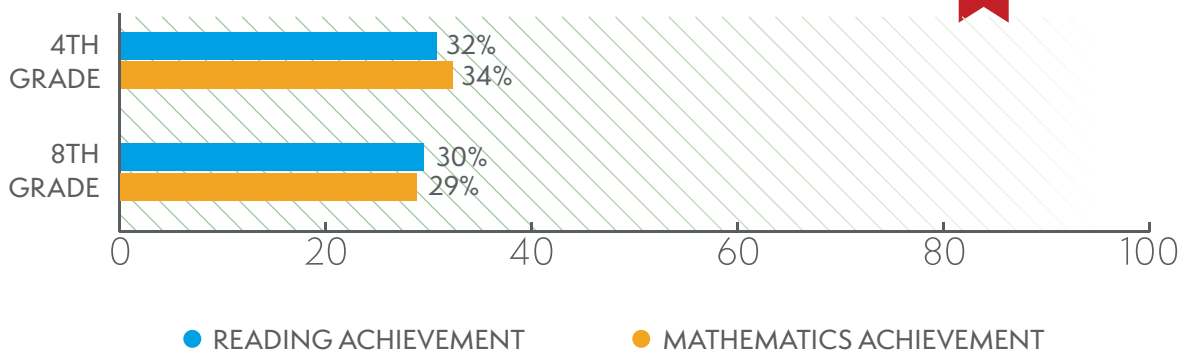


83%
High school graduation rate¹⁰



49%
Percentage of 18- to 24-year-olds enrolled in degree-granting postsecondary institutions¹¹

Students achieving at or above proficient¹²



@REL_West

<https://ies.ed.gov/ncee/edlabs/regions/west/index.asp>

relwest@WestEd.org

¹ U.S. Department of Education, National Center for Education Statistics, Common Core of Data (CCD), "Local Education Agency (School District) Universe Survey", 2017-18 v.1a; "Public Elementary/Secondary School Universe Survey", 2017-18 v.1a; "State Nonfiscal Public Elementary/Secondary Education Survey", 2017-18 v.1a.

² Ibid.

³ Ibid.

⁴ U.S. Department of Education, National Center for Education Statistics, Common Core of Data (CCD), "Public Elementary/Secondary School Universe Survey," 2000-01, 2010-11, 2015-16, and 2016-17.

⁵ U.S. Department of Education, National Center for Education Statistics (NCES), Common Core of Data (CCD), "Public Elementary/Secondary School Universe Survey," Provisional Version 1a, and the NCES Education Demographic and Geographic Estimates (EDGE), "Public Elementary/Secondary School Universe—Geographic Data," 2015-16.

⁶ U.S. Department of Education, National Center for Education Statistics, Common Core of Data (CCD), "State Nonfiscal Survey of Public Elementary/Secondary Education," 2017-18.

⁷ U.S. Department of Education, National Center for Education Statistics, Common Core of Data (CCD), "Public Elementary/Secondary School Universe Survey", 2017-18 v.1a; "State Nonfiscal Public Elementary/Secondary Education Survey", 2017-18 v.1a.

⁸ U.S. Department of Education, National Center for Education Statistics, Common Core of Data (CCD), "Local Education Agency Universe Survey," 2016-17. See Digest of Education Statistics 2018, table 204.20.

⁹ *The State of Preschool 2018, State Preschool Yearbook*. (2019). New Brunswick, NJ: National Institute for Early Education Research.

¹⁰ EDData Data Groups 695, School year 2016-17 Adjusted Cohort Graduation Rate (ACGR).

¹¹ U.S. Department of Commerce, Census Bureau, American Community Survey (ACS), 2017.

¹² U.S. Department of Education, Institute of Education Sciences, National Center for Education Statistics, National Assessment of Educational Progress (NAEP), 2019 Reading Assessment and 2019 Mathematics Assessment.

Public School State Snapshot: Nevada

Number of public schools¹ **708**

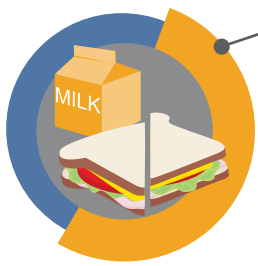
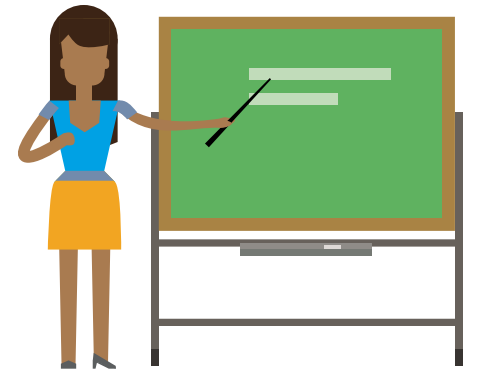


10% are charter schools

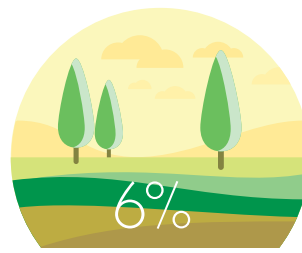


Number of students²
492,180

Number of teachers (FTE)³
23,709



Students eligible for free/reduced price lunch⁴
61%



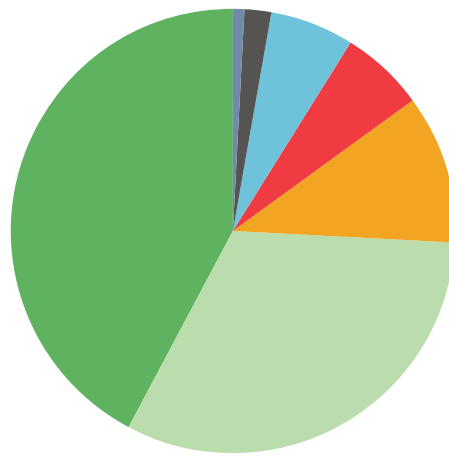
Students living in rural areas⁵
6%



Students with IEPs⁶
13%

Race/ethnicity breakdown⁷

AMERICAN INDIAN/ALASKA NATIVE	1%
ASIAN OR ASIAN/PACIFIC ISLANDER	6%
BLACK	11%
HAWAIIAN NATIVE/PACIFIC ISLANDER	2%
HISPANIC	42%
TWO OR MORE RACES	6%
WHITE	32%



EL students⁸
16%



15%

4-year-olds enrolled in a publicly funded early childhood education program⁹



81%

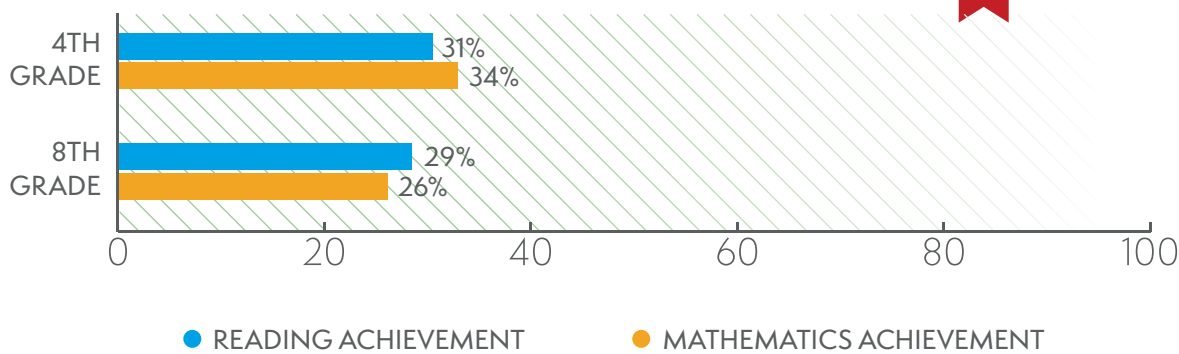
High school graduation rate¹⁰



31%

Percentage of 18- to 24-year-olds enrolled in degree-granting postsecondary institutions¹¹

Students achieving at or above proficient¹²



@REL_West

<https://ies.ed.gov/ncee/edlabs/regions/west/index.asp>

relwest@WestEd.org

¹ U.S. Department of Education, National Center for Education Statistics, Common Core of Data (CCD), "Local Education Agency (School District) Universe Survey", 2017-18 v.1a; "Public Elementary/Secondary School Universe Survey", 2017-18 v.1a; "State Nonfiscal Public Elementary/Secondary Education Survey", 2017-18 v.1a.

² Ibid.

³ Ibid.

⁴ U.S. Department of Education, National Center for Education Statistics, Common Core of Data (CCD), "Public Elementary/Secondary School Universe Survey," 2000-01, 2010-11, 2015-16, and 2016-17.

⁵ U.S. Department of Education, National Center for Education Statistics (NCES), Common Core of Data (CCD), "Public Elementary/Secondary School Universe Survey," Provisional Version 1a, and the NCES Education Demographic and Geographic Estimates (EDGE), "Public Elementary/Secondary School Universe—Geographic Data," 2015-16.

⁶ U.S. Department of Education, National Center for Education Statistics, Common Core of Data (CCD), "State Nonfiscal Survey of Public Elementary/Secondary Education," 2017-18.

⁷ U.S. Department of Education, National Center for Education Statistics, Common Core of Data (CCD), "Public Elementary/Secondary School Universe Survey", 2017-18 v.1a; "State Nonfiscal Public Elementary/Secondary Education Survey", 2017-18 v.1a.

⁸ U.S. Department of Education, National Center for Education Statistics, Common Core of Data (CCD), "Local Education Agency Universe Survey," 2016-17. See Digest of Education Statistics 2018, table 204.20.

⁹ *The State of Preschool 2018, State Preschool Yearbook*. (2019). New Brunswick, NJ: National Institute for Early Education Research.

¹⁰ EDData Groups 695, School year 2016-17 Adjusted Cohort Graduation Rate (ACGR).

¹¹ U.S. Department of Commerce, Census Bureau, American Community Survey (ACS), 2017.

¹² U.S. Department of Education, Institute of Education Sciences, National Center for Education Statistics, National Assessment of Educational Progress (NAEP), 2019 Reading Assessment and 2019 Mathematics Assessment.

Public School State Snapshot: Utah

Number of public schools¹ >>> 1,051



12% are charter schools

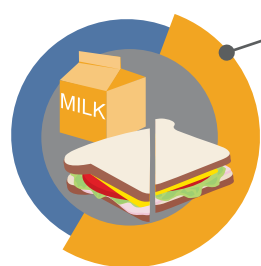
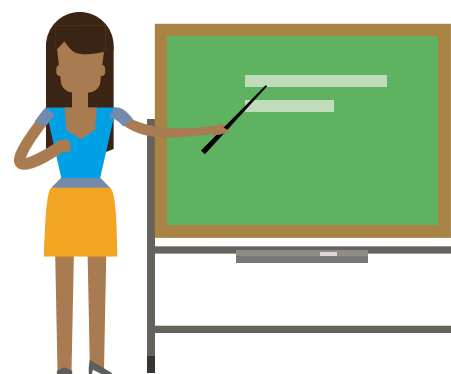


Number of students²

668,274

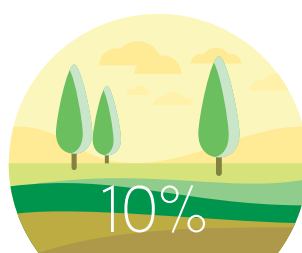
Number of teachers (FTE)³

29,212



Students eligible for free/reduced price lunch⁴

36%



10%

Students living in rural areas⁵

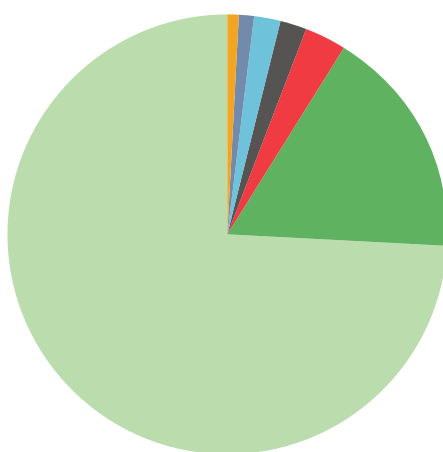


Students with IEPs⁶

13%

Race/ethnicity breakdown⁷

● AMERICAN INDIAN/ALASKA NATIVE	1%
● ASIAN OR ASIAN/PACIFIC ISLANDER	2%
● BLACK	1%
● HAWAIIAN NATIVE/PACIFIC ISLANDER	2%
● HISPANIC	17%
● TWO OR MORE RACES	3%
● WHITE	74%



EL students⁸

6%



13%

4-year-olds enrolled in a publicly funded early childhood education program⁹



86%

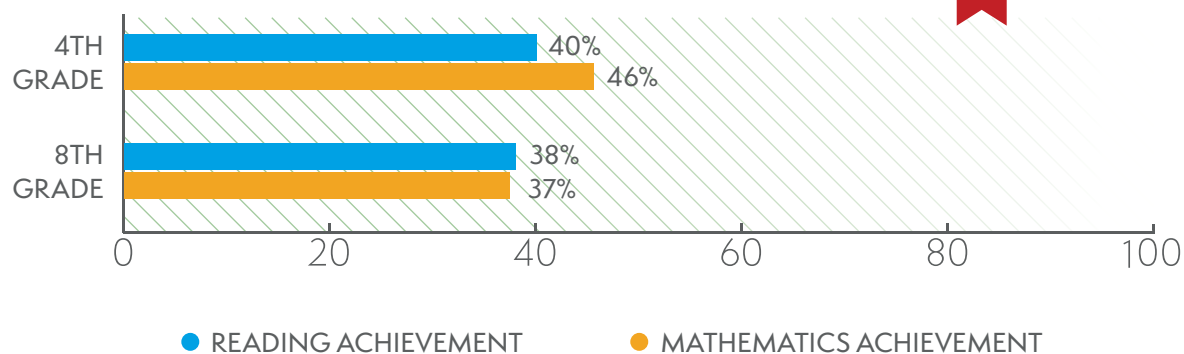
High school graduation rate¹⁰



41%

Percentage of 18- to 24-year-olds enrolled in degree-granting postsecondary institutions¹¹

Students achieving at or above proficient¹²



@REL_West

<https://ies.ed.gov/ncee/edlabs/regions/west/index.asp>

relwest@WestEd.org

¹ U.S. Department of Education, National Center for Education Statistics, Common Core of Data (CCD), "Local Education Agency (School District) Universe Survey", 2017-18 v.1a; "Public Elementary/Secondary School Universe Survey", 2017-18 v.1a; "State Nonfiscal Public Elementary/Secondary Education Survey", 2017-18 v.1a.

² Ibid.

³ Ibid.

⁴ U.S. Department of Education, National Center for Education Statistics, Common Core of Data (CCD), "Public Elementary/Secondary School Universe Survey," 2000-01, 2010-11, 2015-16, and 2016-17.

⁵ U.S. Department of Education, National Center for Education Statistics (NCES), Common Core of Data (CCD), "Public Elementary/Secondary School Universe Survey," Provisional Version 1a, and the NCES Education Demographic and Geographic Estimates (EDGE), "Public Elementary/Secondary School Universe—Geographic Data," 2015-16.

⁶ U.S. Department of Education, National Center for Education Statistics, Common Core of Data (CCD), "State Nonfiscal Survey of Public Elementary/Secondary Education," 2017-18.

⁷ U.S. Department of Education, National Center for Education Statistics, Common Core of Data (CCD), "Public Elementary/Secondary School Universe Survey", 2017-18 v.1a; "State Nonfiscal Public Elementary/Secondary Education Survey", 2017-18 v.1a.

⁸ U.S. Department of Education, National Center for Education Statistics, Common Core of Data (CCD), "Local Education Agency Universe Survey," 2016-17. See Digest of Education Statistics 2018, table 204.20.

⁹ *The State of Preschool 2018, State Preschool Yearbook.* (2019). New Brunswick, NJ: National Institute for Early Education Research.

¹⁰ EDData Data Groups 695, School year 2016-17 Adjusted Cohort Graduation Rate (ACGR).

¹¹ U.S. Department of Commerce, Census Bureau, American Community Survey (ACS), 2017.

¹² U.S. Department of Education, Institute of Education Sciences, National Center for Education Statistics, National Assessment of Educational Progress (NAEP), 2019 Reading Assessment and 2019 Mathematics Assessment.

This product was prepared under Contract ED-IES-17-C-0012 by Regional Educational Laboratory West, administered by WestEd. The content does not necessarily reflect the views or policies of IES or the U.S. Department of Education, nor does mention of trade names, commercial products, or organizations imply endorsement by the U.S. Government.