

# Public School State Snapshot: California

Number of public schools<sup>1</sup> » 10,323

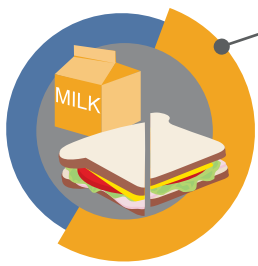
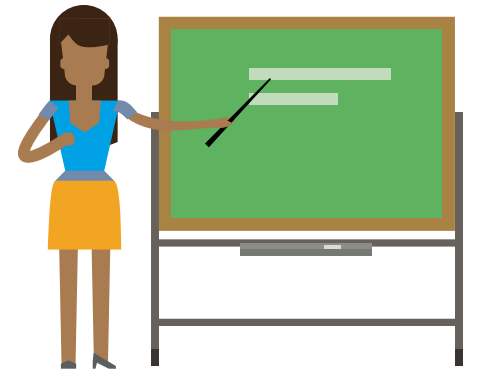


12% are charter schools

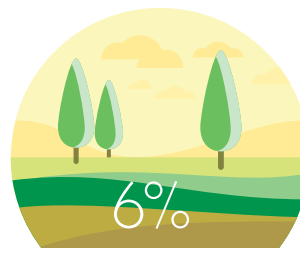


Number of students<sup>2</sup>  
6,206,088

Number of teachers (FTE)<sup>3</sup>  
271,523



Students eligible for free/reduced price lunch<sup>4</sup>  
58%



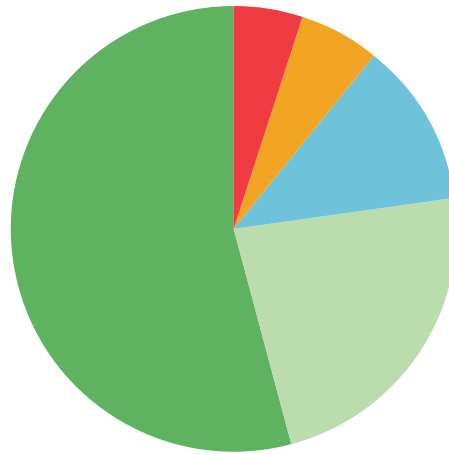
6%  
Students living in rural areas<sup>5</sup>



Students with IEPs<sup>6</sup>  
12%

## Race/ethnicity breakdown<sup>7</sup>

ASIAN OR ASIAN/PACIFIC ISLANDER	12%
BLACK	6%
HISPANIC	54%
TWO OR MORE RACES	5%
WHITE	23%



EL students<sup>8</sup>  
20%



4-year-olds enrolled in a publicly funded early childhood education program<sup>9</sup>  
47%

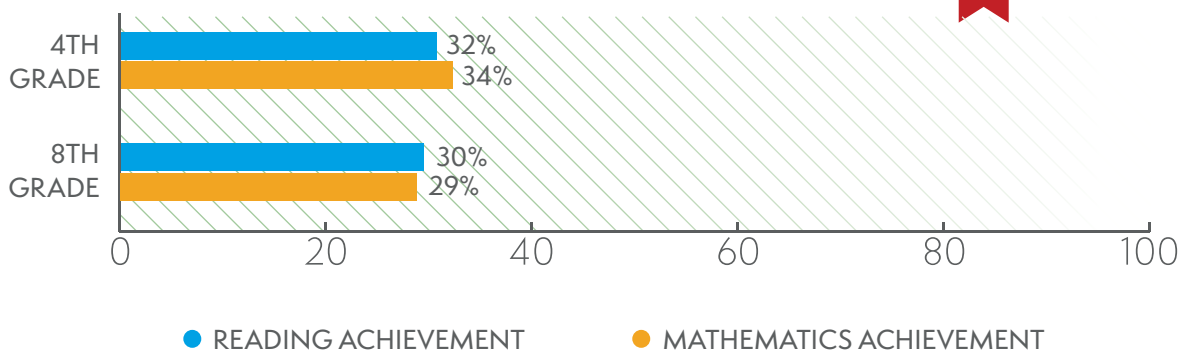


83%  
High school graduation rate<sup>10</sup>



49%  
Percentage of 18- to 24-year-olds enrolled in degree-granting postsecondary institutions<sup>11</sup>

## Students achieving at or above proficient<sup>12</sup>



@REL\_West

<https://ies.ed.gov/ncee/edlabs/regions/west/index.asp>

relwest@WestEd.org

<sup>1</sup> U.S. Department of Education, National Center for Education Statistics, Common Core of Data (CCD), "Local Education Agency (School District) Universe Survey", 2017-18 v.1a; "Public Elementary/Secondary School Universe Survey", 2017-18 v.1a; "State Nonfiscal Public Elementary/Secondary Education Survey", 2017-18 v.1a.

<sup>2</sup> Ibid.

<sup>3</sup> Ibid.

<sup>4</sup> U.S. Department of Education, National Center for Education Statistics, Common Core of Data (CCD), "Public Elementary/Secondary School Universe Survey," 2000-01, 2010-11, 2015-16, and 2016-17.

<sup>5</sup> U.S. Department of Education, National Center for Education Statistics (NCES), Common Core of Data (CCD), "Public Elementary/Secondary School Universe Survey," Provisional Version 1a, and the NCES Education Demographic and Geographic Estimates (EDGE), "Public Elementary/Secondary School Universe—Geographic Data," 2015-16.

<sup>6</sup> U.S. Department of Education, National Center for Education Statistics, Common Core of Data (CCD), "State Nonfiscal Survey of Public Elementary/Secondary Education," 2017-18.

<sup>7</sup> U.S. Department of Education, National Center for Education Statistics, Common Core of Data (CCD), "Public Elementary/Secondary School Universe Survey", 2017-18 v.1a; "State Nonfiscal Public Elementary/Secondary Education Survey", 2017-18 v.1a.

<sup>8</sup> U.S. Department of Education, National Center for Education Statistics, Common Core of Data (CCD), "Local Education Agency Universe Survey," 2016-17. See Digest of Education Statistics 2018, table 204.20.

<sup>9</sup> *The State of Preschool 2018, State Preschool Yearbook*. (2019). New Brunswick, NJ: National Institute for Early Education Research.

<sup>10</sup> EDData Data Groups 695, School year 2016-17 Adjusted Cohort Graduation Rate (ACGR).

<sup>11</sup> U.S. Department of Commerce, Census Bureau, American Community Survey (ACS), 2017.

<sup>12</sup> U.S. Department of Education, Institute of Education Sciences, National Center for Education Statistics, National Assessment of Educational Progress (NAEP), 2019 Reading Assessment and 2019 Mathematics Assessment.