

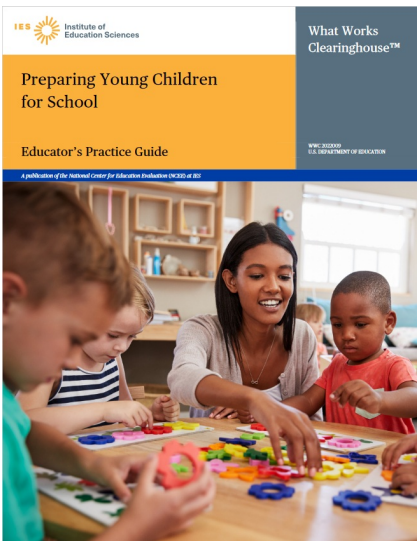


As you enter the winter break, we hope you find time to rest, recharge, and focus on what’s important to you: learning, lifting, and leading. To season your winter reading, in this newsletter we offer a few resources to help you think about supporting students’ learning; lifting up your students, their families, and your colleagues; and leading your school community.

## Learn



Ever wonder about how to support students’ social-emotional development while teaching math? Check out our latest [blog post](#) for insights, and visit this [resource page](#) for additional materials.

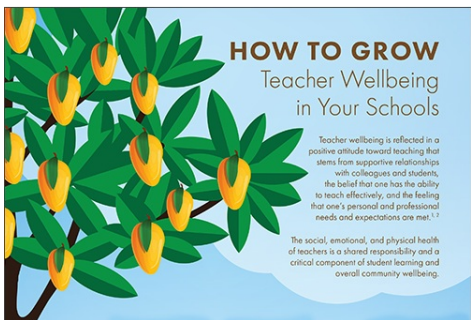


A new [practice guide](#) from What Works Clearinghouse provides seven evidence-based, practical recommendations to help you prepare young children for school.

## Lift



Family engagement means engaging **all** families and empowering them to support a growth mindset in their kids. Find resources in both Spanish and English to bring families together in our [Community Math Night Facilitators’ Toolkit](#).

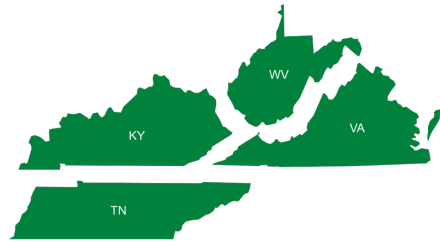


You care about and support your colleagues in meaningful ways all through the year. As this calendar year draws to an end, think about [how to continue to retain and grow excellent teachers](#) in the new year.

# Lead



In the post-pandemic world, how can you make sense of your school performance data? A [new infographic](#) from the RELs is here to help you make sure you're using your data appropriately.



REL Appalachia is here to help, too! Learn more about what partnership and capacity-building with us can look like in this [blog post](#).

---

For even more resources related to these topics...

[Click here for the REL Corner](#)

## Out and About With REL Appalachia



We're always thrilled to be out in the field connecting with folks and sharing what we're learning! Earlier this month, REL Appalachia team members were at the Virginia ASCD Annual Conference, where we talked about [how to integrate social-emotional learning into math instruction](#).

---

The team was also at the National Rural Education Association's 2022 Convention & Research Symposium in Green Bay, Wisconsin. Learn about the [strategies to support students and educators experiencing trauma](#) that we shared at the conference.



---

In October, our team was at the Niswonger Foundation's Learning Together Day 2022 in Tennessee. Check out our presentation about [how high-dosage tutoring can improve student learning](#).

Connect With Us!

Check out our Strengthening Mathematics Learning project kickoff [#materials!](#) [#Resources](#) include a handout on supporting students in math and an infographic [#educators](#) can share with families to promote a math mindset! [ies.ed.gov/ncee/rel/Produ...](https://ies.ed.gov/ncee/rel/Produ...)



2:00 PM · Dec 1, 2022

REL Appalachia is deeply committed to supporting educators in our region. For the latest news and updates and resources, [follow us on Twitter](#) and tag us [@REL\\_Appalachia](#).

If you have stories, successes, challenges, or other feedback you'd like to share, [please reach out to us via email!](#) We'd love to hear from you!



[REL Appalachia](#)

Independent, unbiased research support  
for your education priorities

*This newsletter was prepared under Contract No. 91990022C0008 by Regional Educational Laboratory Appalachia, administered by SRI International. The content does not necessarily reflect the views or policies of IES or the U.S. Department of Education, nor does mention of trade names, commercial products, or organizations imply endorsement by the U.S. Government.*



Try email marketing for free today!