

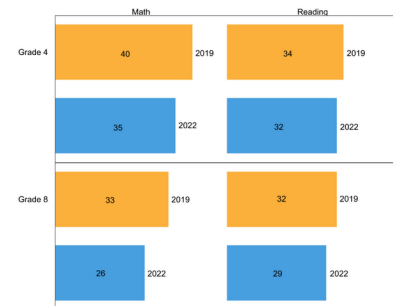


As we head into spring, let’s take a moment to reflect on some of the exciting work going on in the REL Appalachia region! Educators are focusing on core literacy and math content in response to last October’s National Assessment of Educational Progress (NAEP) scores. They are also looking at ways to expand school support for kinship caregivers and grandfamilies, and postsecondary practitioners are exploring how to use trauma-sensitive approaches to help students build resiliency.

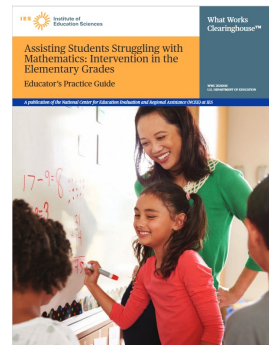
REL Appalachia is here to support you in these efforts and more. To keep you up to date on what works, we share some of the most recent evidence-based resources and strategies we’ve developed or gathered. These resources can help you ensure your students, schools, and communities are in a good place to learn and thrive.

## New Resources

**What do the 2022 reading and math scores show?**  
 Figure 1. Percentage of U.S. public school students scoring at or above Proficient on NAEP



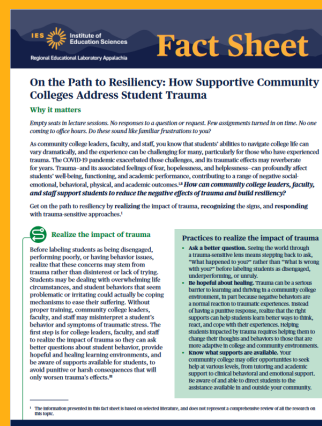
Are you looking for ways to accelerate your students’ **learning in reading and math**? In our new [blog post](#) responding to the declining 2022 NAEP scores, we catalog evidence-based reading and math resources by grade level.



The What Works Clearinghouse’s practice guide on supporting **elementary students who are struggling in math** provides evidence-based practices for how teachers can tailor their instruction to meet students’ needs. You can access the summary document or the full guide on the [practice guide page](#).



Perhaps you’re interested in best practices for administering and using data from **kindergarten readiness screeners**. In our [latest Ask An Expert](#), you’ll find a side-by-side comparison of national kindergarten screening



Postsecondary life is challenging, particularly for students who have

assessments, including the domains in each screener, the administration method, and validity and reliability information.

experienced trauma. Learn about **trauma-sensitive approaches** in a [new fact sheet](#) so you can help students on the path to resiliency.

We recently shared our [Community Math Night Facilitators' Toolkit](#) with state educational agency staff, [giving state leaders ideas for how to use the resource](#), in whole and in part, to promote community engagement in math learning.



## New Community of Practice

Do you have ideas, or want to learn more, about how schools can **support kinship caregivers and grandfamilies**?

Join a [new community of practice](#) that REL Appalachia is hosting! Contact us if you're interested.



## Out and About with REL Appalachia

There are many opportunities to connect with the REL Appalachia team at in-person conferences over the next few months. Please come and say hi!

### Virginia Community College System New Horizons Conference



We'll be listening and learning with you at the [Virginia Community College System New Horizons Conference](#) at the Hotel Roanoke. Planning to attend? Find Deborah Jonas on March 30 and let her know how REL Appalachia can support you. She'll be ready to share resources to support trauma-sensitive practices — and share some swag!

---

### Community Colleges of Appalachia Annual Conference

We'll co-present on understanding and implementing evidence-based trauma-sensitive practices with representatives from the Virginia Community College System at the [Community Colleges of Appalachia Annual Conference](#) in Asheville, North Carolina, on June 4–6.



---

### NCSM 55th Annual Conference

At the [NCSM 55th Annual Conference](#) in Washington, DC, on October 28–31, we'll co-present with our partners from Kentucky on a



new math coaching observation rubric we co-developed to provide formative and summative feedback about coaching effectiveness.

## Connect With Us!



REL Appalachia is deeply committed to supporting educators in our region. For the latest news and updates and resources, [follow us on Twitter](#) and tag us [@REL\\_Appalachia](#).

If you have stories, successes, challenges, or other feedback you'd like to share, [please reach out to us via email!](#) We'd love to hear from you!



### [REL Appalachia](#)

Independent, unbiased research support  
for your education priorities

*This newsletter was prepared under Contract No. 91990022C0008 by Regional Educational Laboratory Appalachia, administered by SRI International. The content does not necessarily reflect the views or policies of IES or the U.S. Department of Education, nor does mention of trade names, commercial products, or organizations imply endorsement by the U.S. Government.*

SRI International | 1100 Wilson Blvd., Suite 2800,  
Arlington, VA 22209