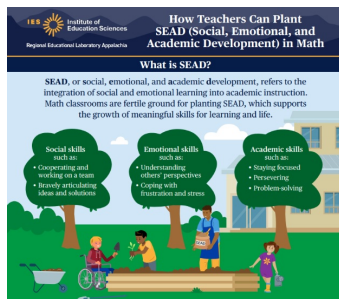




As the weather heats up and schools let out, we are sharing some resources you can integrate into summer enrichment programming as well as core instruction in the fall. REL Appalachia staff wish you rest and rejuvenation over the next few months as you consider new ways to inspire and connect with the students and families you serve.

New Resources



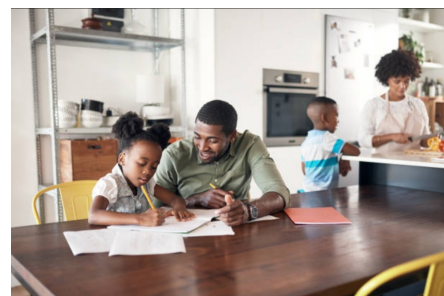
Integrating social-emotional learning into core content can make a powerful difference for students. This [new infographic](#) explains why this approach is beneficial and how it might look in mathematics.



REL Appalachia's latest [blog post](#) details both **why and how we integrate social-emotional learning and trauma-sensitive practices** into projects that serve students from prekindergarten to postsecondary.



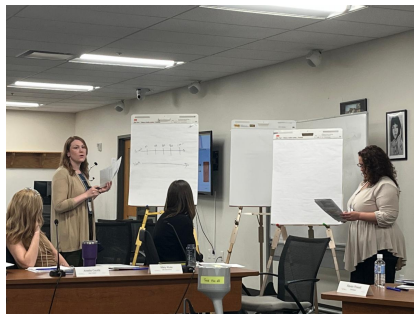
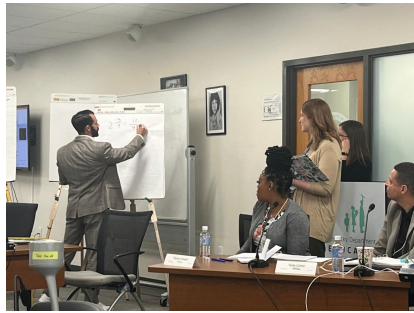
EdWeek recently featured [REL Appalachia's Community Math Nights Facilitators' Toolkit](#) in an [article](#) on **equipping families to support student learning in math**.



As you plan and implement summer programming — or plan for instruction for the fall — check out these REL resource collections on [summer learning](#) and on **literacy and math**.

Out and About with REL Appalachia

REL Appalachia staff members connected with [our Governing Board members](#) in Frankfort, Kentucky, in late April to learn about pressing needs in the region and garner their feedback on our emerging needs in math. Our time together was rich with conversation that will inform our plans in the months and years to come.



We'd also love to see *you* while we're on the road. Please come say hi!

Community Colleges of Appalachia Annual Conference



We'll co-present on understanding and implementing evidence-based trauma-sensitive practices with representatives from the Virginia Community College System at the [Community Colleges of Appalachia annual conference](#) in Asheville, North Carolina, on June 4–6.

National Forum to Advance Rural Education

At the [National Forum to Advance Rural Education](#) convention and research symposium, November 16-17 in Chattanooga, Tennessee, we'll present on four dimensions of college and career preparation for rural youth and expanding school supports for kinship caregivers and grandfamilies.



NCSM 55th Annual Conference

At the National Council of Supervisors of Mathematics (NCSM) [55th annual conference](#) in Washington, DC, on October 28–31, we'll co-



present with staff from the Kentucky Department of Education on a new math coaching observation rubric we co-developed to provide formative and summative feedback about coaching effectiveness.

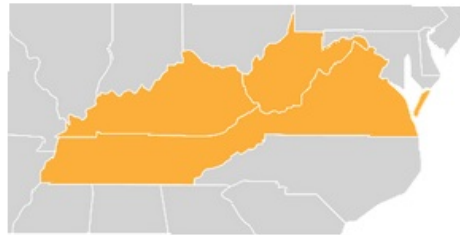
Learning Forward Annual Conference

Learn more about how to integrate social-emotional learning strategies and techniques into math instruction at the [Learning Forward annual conference](#) in National Harbor, Maryland, near Washington, DC, on December 3–6.



In Case You Missed It

See our [spring 2023 newsletter](#), and please [subscribe](#) if you're not already on our distribution list.



Connect With Us!



#TeacherAppreciationWeek may be over, but we're not done celebrating educators just yet! Teacher #wellbeing should be a priority every day. Check out this infographic to learn more about why teacher wellbeing matters and how to support it in your school. ies.ed.gov/ncee/rel/Produ...



REL Appalachia is deeply committed to supporting educators in our region. For the latest news and updates and resources, [follow us on Twitter](#) and tag us [@REL_Appalachia](#).

If you have stories, successes, challenges, or other feedback you'd like to share, please reach out to us [via email!](#) We'd love to hear from you!



[REL Appalachia](#)

Independent, unbiased research support
for your education priorities

This newsletter was prepared under Contract No. 91990022C0008 by Regional Educational Laboratory Appalachia, administered by SRI International. The content does not necessarily reflect the views or policies of IES or the U.S. Department of Education, nor does mention of trade names, commercial products, or organizations imply endorsement by the U.S. Government.

SRI International | 1100 Wilson Blvd., Suite 2800,
Arlington, VA 22209