

NEWSLETTER

**Director Updates | Measuring Equity Initiatives | Supporting Secondary Transitions
Addressing Chronic Absenteeism | Governing Board Gratitude | Out and About | Connect with Us**

Director Updates



Brian Gill
Director, REL Mid-Atlantic

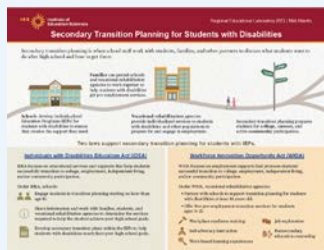
Happy summer, everyone! Congrats to all the educators in our audience for finishing another school year. I hope the summer months give you opportunities to relax a bit and enjoy some time with family and friends. And I hope you might have a few moments to explore some of the resources we've shared below, including work on monitoring the progress of equity initiatives, supporting transitions for students with disabilities, and attacking chronic absenteeism. You can also meet several new members of REL Mid-Atlantic's Governing Board. Check it out, and we'll be in touch again in the fall.

Measuring And Monitoring The Progress Of Equity Initiatives

Districts and schools invest in professional learning, instructional materials, policy and procedural changes, and student programming to promote equitable learning environments. Assessing the progress of these investments, however, can be challenging. [Our latest blog post](#) offers a variety of approaches and tools that educators can use to measure and monitor the progress of equity-related initiatives and shares how the RELs can help state and local education agencies find and refine an approach that works best for them.



Supporting Secondary Transitions For Youth With Disabilities



Students with disabilities face unique challenges as they prepare for life after graduation and need personalized support to help them succeed. Secondary transition planning is when school staff work with students, families, and other supports to discuss what students want to do after high school and how to get there. In collaboration with the Maryland Department of Disabilities, we created an infographic (the first in a three-part series) to raise awareness about the secondary transition planning process.

- [Secondary Transition Planning for Students with Disabilities](#)
- **Coming soon!** Infographics that share best practices for supporting secondary transitions for youth with disabilities and considerations for developing inclusive college and career readiness frameworks.

You can also visit our website to [learn how we are partnering](#) to improve post-high school transitions for students with disabilities in Maryland by developing a data linkage tool.

Addressing Chronic Absenteeism

Three REL Mid-Atlantic resources were shared with attendees at the White House's [Every Day Counts Summit: Addressing Chronic Absenteeism and Increasing Student Engagement](#), hosted May 15 by the U.S. Department of Education and the Domestic Policy Council:

1. [Using Data from Schools and Child Welfare Agencies to Predict Near-Term Academic Risks](#)
2. [Pillars for Family Engagement: Foundation for Meaningful & Equitable School & Family Partnerships](#)
3. [Go-Learn-Grow Toolkit: Improving the School Attendance of New Jersey's Youngest Learners](#)

A [four-part blog post](#) from the Institute of Education Sciences included these resources and highlighted a variety of resources educators can use to improve student engagement and attendance.

Gratitude For Our Governing Board

We couldn't do what we do without support from our Governing Board. Their commitment to advancing research and implementing evidence-based practices helps improve the quality of education across the Mid-Atlantic region.

[Meet the full REL Mid-Atlantic Governing Board](#)

Welcome, new board members!



Marcus Delgado

Deputy Secretary,
Office of Administration,
Pennsylvania Department
of Education



Jeffrey Lawson

Superintendent, Cecil
County Public Schools



Geoff Sanderson

Deputy State
Superintendent of
Accountability, Maryland
State Department of
Education



Carey Wright

Maryland State
Superintendent of Education

Spotlights

- Marilyn Pryle proposes National Board Certification for Pennsylvania teachers in a new [policy brief](#).
- Thank you, Karen Molchanow, for your contributions and dedication during your tenure on our Board. You will be missed!
- Congratulations, Christina Grant, on your new position as executive director for the Center for Education Policy Research at Harvard University!

Out And About

On May 30, REL Mid-Atlantic's Elisa Steele joined Dr. Scott Kuren, Director of the Pennsylvania Department of Education's Office for Safe Schools, and Jim McDonald, Director of Resolve Behavioral Health Services for Intermediate Unit (IU) 20, to present at the annual gathering of Pennsylvania's 29 IUs. They shared information about our [partnership](#) and resources, including the [Planning Guide for Social-Emotional Wellness Leads](#), which IU leads can use to make social-emotional wellness efforts more evidence-based and cohesive



In case you missed it, Dr. Kuren and Megan Streeter's [blog post](#) features the planning guide and our work with IU social-emotional wellness leads.

Connect with Us

You can now find the [REL Program on LinkedIn!](#)



Find this newsletter and all past issues on the [REL Mid-Atlantic Newsletter webpage!](#)