



## REL Midwest welcomes new director!

REL Midwest is pleased to announce that **Carrie Scholz**, a managing researcher at the American Institutes for Research, has taken on the role of REL Midwest director following the transition of former director Julie Kochanek to an executive role at AIR. Scholz brings more than 13 years of experience conducting needs-sensing efforts, developing research–practice partnerships, and leading applied research and technical assistance projects for REL Midwest. Please extend her a big welcome! We are excited to have her leadership as we continue to partner with educators across the Midwest to improve learning for all students, especially those farthest from opportunity.

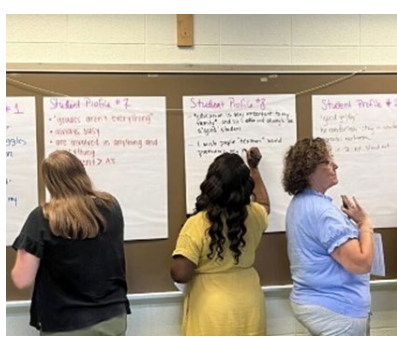
## Our work



## New video: Blending evidence-based literacy practices with culturally and linguistically responsive practices

REL Midwest's latest video explores how educators can leverage multilingual students' home languages or dialects to support literacy learning. The video provides practical strategies educators can use to engage students' oral language strengths in learning to read, write, and comprehend printed language.

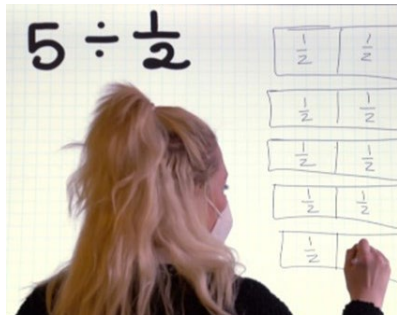
[Watch the Video](#)



## ENACT teachers learn new ways of aligning instructional strategies to students' needs

Think back to your time in middle school. What advice would you give your past teachers on how to engage you in learning? At a recent REL Midwest ENACT Summer Institute, a group of grade 6 math teachers in Wisconsin shared the advice they would give their middle school teachers. The exercise was part of a training focused on using computational thinking and student-focused practices to support math engagement and achievement of students in grade 6.

[Read More](#)

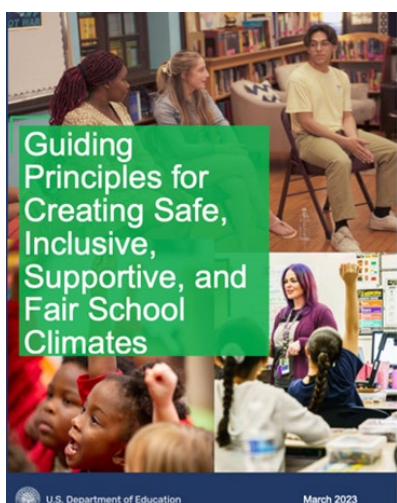


## Virtual manipulatives as a tool to support students in learning fractions

Research has found that virtual versions of physical manipulatives are powerful tools for helping students visualize and make sense of fractions. We highlight the benefits in a blog post from a member of the team developing REL Midwest's Teaching Fractions Toolkit, a new companion product to the What Works Clearinghouse practice guide *Developing Effective Fractions Instruction for Kindergarten Through 8th Grade*.

[Read More](#)

## Spotlight on safe and supportive schools



## Guiding principles in school discipline to support students' social, emotional, behavioral, and academic needs

The U.S. Department of Education released a [guide](#), along with four fact sheets (in English and Spanish), featuring recommendations for evidence-based practices that allow students to learn, grow, and be successful. The fact sheets provide strategies for school and district leaders, student and teacher support teams, educators and school-based staff, and schools to enhance relationships with families.

[Learn More](#)

## Featured products from across IES

Browse products from the Institute of Education Sciences (IES), which oversees the REL program and serves as the statistics, research, and evaluation arm of the U.S. Department of Education.

- National Center on Education Statistics Report: [Condition of Education 2023](#)
- National Center on Education Statistics Resource: [Equity in Education Dashboard](#)
- REL Program Blog Series: [RELs Make a Difference](#)
- REL Appalachia Infographic: [How Educators and Caregivers Can Create Supportive Conditions for Success in PreK–12 Mathematics](#)
- REL Central Infographic: [How Individual Plans of Study Can Support Students' College and Career Readiness and Success](#)
- REL Mid-Atlantic Fact Sheet: [School Climate During the COVID-19 Pandemic in a Sample of Pennsylvania Schools](#)
- REL Pacific Infographic: [Implementing Systemic Change in Education](#)
- REL Southeast Infographic: [Improving Adolescent Literacy](#)
- REL Southwest Infographic: [Supporting School Leaders and Teachers to Implement Research-Based Early Learning Practices](#)
- REL West Infographic: [The Foundation for Education Equity Systems Change](#)

## Upcoming events

**Oct. 18 Raising the Bar for Dyslexia Screening for Multilingual and Bidialectal Learners.** *Webinar.* (3:00–4:00 p.m. Eastern Time). Join REL Northeast & Islands for a webinar to learn about evidence-based practices for screening multilingual and bidialectal learners who are at risk for dyslexia. [Register](#)

**Oct. 26 Equity in Career and Technical Education and Work-Based Learning: Research and Practitioner Perspectives.** *Webinar.* (9:00–10:00 a.m. Eastern Time). Join REL Northeast & Islands for a webinar on equity in career and technical education and work-based learning initiatives. [Register](#)

**Nov. 14 English Proficiency and the Pandemic: Where Are English Learner Students' Language and Literacy Skills Now?** *Webinar.* (3:00 p.m. Central Time). Join REL Southwest for a webinar on the impact of the COVID-19 pandemic on English learner students' English language proficiency. [Register](#)

## From the REL webinar archive

Recordings of past REL webinars are [available online](#). Check out these featured titles for October:

- [Improving Rural Teacher Retention: Developing Localized Strategies to Address Teacher Working Conditions](#), REL Northwest
- [Developing Culturally Responsive Educators: Teacher Preparation, Job-Embedded Support, and Professional Educator Growth Systems for Schools Serving Indigenous Populations](#), REL Southwest
- [Using Data and Evidence to Strengthen Professional Learning Communities Around Math Instruction](#), REL West

## Contact us

Please contact us for more information about the content in this newsletter or to speak to a member of our staff. We look forward to hearing from you.

## REL Midwest

10 S. Riverside Plaza, Suite 600  
Chicago, IL 60606



This material was prepared under Contract 91990022C0011 by Regional Educational Laboratory Midwest, administered by the American Institutes for Research. The content does not necessarily reflect the views or policies of Institute of Education Sciences (IES) or the U.S. Department of Education, nor does mention of trade names, commercial products, or organizations imply endorsement by the U.S. Government.