

## Fostering supportive school environments



### New opportunities to address chronic absenteeism and build supportive schools

**Calling all Midwest school districts!** You're invited to join two REL Midwest partnerships focused on fostering more inclusive, equitable, and safe learning environments. Participants will receive free, ongoing professional development and resources.

### Join a data-based approach to improve middle schoolers' sense of belonging

The [Data-Informed Leadership for Equity \(DILE\) partnership](#) is addressing factors that take students away from school, including absenteeism and disciplinary actions. Middle school leaders and staff receive free training on using data to identify student groups showing signs of disengagement and on using student-focused practices to improve sense of belonging.

**Interested?** Contact Sonica Dhillon at [DILE@air.org](mailto:DILE@air.org).



WEBINAR

#### Sense of Belonging: What Every Middle School Educator Needs to Know

**April 11, 2024 | 1 p.m. Central Time**

Join us for a free webinar on the importance of sense of belonging for middle school students as well as evidence-based strategies for improving students' sense of belonging in school. [Register](#)

### Participate in an equity audit collaboration to build safe and supportive schools

The [Making Equitable Schools Audit \(MESA\) partnership](#) seeks to ensure that all members of a school community—including students, teachers, and staff—experience a safe and supportive school environment. MESA is a yearlong facilitated and collaborative approach designed to help schools use existing data and leverage community-wide relationships.

**Interested?** Contact Melissa Yisak at [relmw.mesa@air.org](mailto:relmw.mesa@air.org).



### Building inclusive and equitable learning environments

Promote the conditions that make it possible for all students to realize their potential. This infographic highlights how partnerships from across the REL program are building inclusive and equitable learning environments at the state, district, and school levels.

[Read More](#)



### The state of school safety and crime

A new collection of data from the **National Center for Education Statistics** sheds light on the state of school crime and safety in the United States, including rates of bullying.

- [Measuring Student Safety: New Data on Bullying Rates at School](#)
- [New Schools Data Examine School Crime and Safety](#)

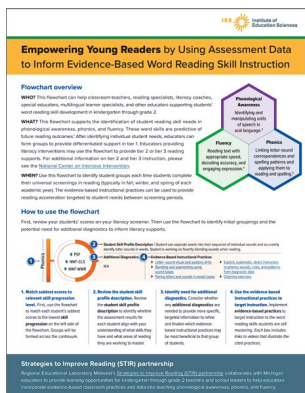
## Strategies to support young readers



### Speech-to-print, print-to-speech: Using students' home language knowledge in equitable early literacy instruction

In part two of our Q&A blog series, REL Midwest literacy coach Christina Grayson and speech-language pathologist Dr. Ryan Lee-James discuss practical strategies for teachers to leverage students' cultural and linguistic knowledge in phonemic awareness, phonics, and vocabulary learning.

[Read More](#)



### Empowering young readers by using assessment data to inform instruction

A new set of resources for **grades K–2** helps teachers, literacy coaches, and other educators connect early literacy screening data to actionable, evidence-based practices. Educators can use the grade-specific charts to support students' phonological awareness, phonics skills, and reading fluency.

[Read More](#)

## Professional development on teaching fractions



### Join our study to receive free math professional development for sixth grade!

Don't miss this chance! We're seeking 40 schools to join a study with our [Teaching Fractions Toolkit partnership](#). Districts will receive **free research-based training and resources** to help sixth-grade teachers improve students' ability to understand and solve problems with fractions. Watch this [video](#) for more information.

**Interested?** Contact Jennifer Anthony at [janthony@air.org](mailto:janthony@air.org) or complete our [interest form](#).

## From the REL webinar archive

Recordings of REL webinars are [available online](#). Check out these featured titles for April:

- [Improving School Performance Measures to Raise the Bar: A Framework for Diagnostic Use of Data](#), REL Mid-Atlantic
- [Using the Teaching Fractions Toolkit to Support Evidence-Based Instruction in 6th Grade](#), REL Midwest

#### Contact us

Please contact us for more information about the content in this newsletter or to speak to a member of our staff. We look forward to hearing from you.

#### REL Midwest

10 S. Riverside Plaza, Suite 600  
Chicago, IL 60606



This material was prepared under Contract 91990022C0011 by Regional Educational Laboratory Midwest, administered by the American Institutes for Research. The content does not necessarily reflect the views or policies of Institute of Education Sciences (IES) or the U.S. Department of Education, nor does mention of trade names, commercial products, or organizations imply endorsement by the U.S. Government.