



Partner spotlight: Putting the science of reading into practice

Guest author Heidi Turchan, an early literacy consultant for Calhoun Intermediate School District in Michigan, describes how using structured literacy instructional routines can support young learners. Turchan is part of REL Midwest's Strategies to Improve Reading (STIR) partnership, which is piloting an approach to improve K–1 literacy instruction with educators in Battle Creek Public Schools and Lansing Public Schools.

[Read More](#)

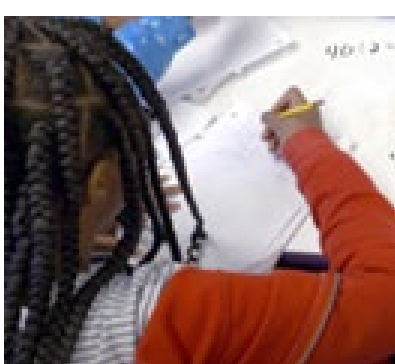
Our work: Middle school math



Math mindset: Transforming the middle school math experience

This blog post highlights our latest [documentary](#), produced in collaboration with WTTW Chicago Public Broadcasting Station. The program illustrates five evidence-based themes for improving middle school students' math engagement and learning. In addition, educators at Jonathan Burr Elementary School in Chicago share how they put the strategies into practice.

[Read More](#)



Inspiring Milwaukee students to be lifelong STEM learners

Computational thinking skills and student-focused instructional practices are two powerful strategies for supporting middle school students' engagement and confidence in math. This blog post and [related infographic](#) describe how REL Midwest's ENGagement and Achievement Through Computational Thinking (ENACT) partnership is supporting the use of these strategies as a bridge to encourage lifelong STEM learning and success.

[Read More](#)

REL resource roundup



Effective early literacy instruction

We rounded up resources from across the REL network to support the use of evidence-based early literacy instruction.

- Watch these **REL Midwest** videos to see evidence-based practices for [teaching phonemic awareness and phonics in the early grades](#) and for [supporting struggling readers in the primary grades](#).
- Explore **REL Southeast's** extensive [early literacy resources](#), including a fact sheet summarizing [20 years of research on effective early literacy instruction](#) and a series of [K–3 teachers' guides for supporting family involvement in foundational reading skills](#).
- Enliven early literacy instruction with **REL West's** planning guide, which offers tips and resources for [joyful read-alouds and creative experiences for young children](#).

Upcoming events

April 25: Supporting Students in Effective Transitions, *Region 9 Comprehensive Center webinar (1:00 p.m. CT)*. Hosted by Region 9 with the National Center for Safe and Supportive Learning Environments, this webinar will present recommendations for youth-serving adults on how best to support students transitioning to traditional school settings from non-traditional settings, such as alternative schools. [Register](#)

May 9: Developing Culturally Responsive Educators: Teacher Preparation, Job-Embedded Support, and Professional Educator Growth Systems for Schools Serving Indigenous Populations, *REL Southwest webinar (3:00–4:30 p.m. CT)*. Join REL Southwest for a webinar on how they partnered with Santa Fe Indian School in New Mexico to develop a culturally responsive educator evaluation system for teachers working with Indigenous students. [Register](#)

From the REL webinar archive

Recordings of all REL webinars are [available online](#). Check out these featured titles for April:

- [Assessment Systems in Indigenous Contexts](#), REL Pacific
- [Experiences from the Field: Perspectives of Teachers of Color](#), REL Central

Contact us

Please contact us for more information about the content in this newsletter or to speak to a member of our staff. We look forward to hearing from you.

REL Midwest

10 S. Riverside Plaza, Suite 600
Chicago, IL 60606

