

Fostering safe and supportive schools



You are welcome: Creating safe and supportive schools

Students learn best when they feel safe, connected, and respected. A new REL Midwest [public television program](#), produced with Ideastream Public Media, showcases efforts in Akron Public Schools to foster safe and supportive school environments.

The program features the Making Equitable Schools Audit approach. A [new infographic](#) maps the stages in this approach, which is designed to help schools leverage community-wide relationships and data to build more welcoming and equitable school experiences.



How belonging can help middle school student engagement and attendance

Sense of belonging plays an important role in how students experience school. This [blog post](#) from our Data Informed Leadership for Equity partnership draws on the research to explore the unique needs of middle school students and why fostering a sense of belonging is so important for this age group.

Strengthening work-based learning



From classroom to career: Work-based learning for Indiana's students

Learn how educators in Indiana are using innovative approaches to work-based learning to prepare students for the careers of tomorrow. This [public television program](#), produced with Ball State PBS, spotlights three models of work-based learning at Indiana high schools. In addition, a [companion blog post](#) notes eight considerations for practice to strengthen work-based learning.

Improving fractions instruction

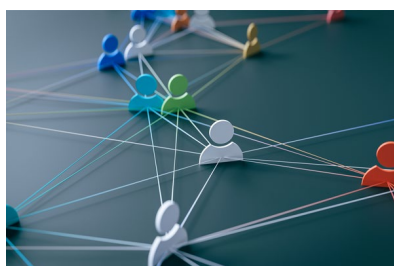


Two practical strategies for unlocking fractions: A preview of the Teaching Fractions Toolkit

A computational understanding of fractions in 6th grade lays the groundwork for later success in math. In this [blog post](#), we highlight two evidence-based strategies teachers can use to help 6th graders demystify fractions. The strategies are from our forthcoming Teaching Fractions Toolkit, set for release in 2026.

Join us! Schools and districts can receive advance toolkit resources and professional development at no charge by [joining our toolkit study](#).

Keep up with REL news and research



Connect with us on LinkedIn!

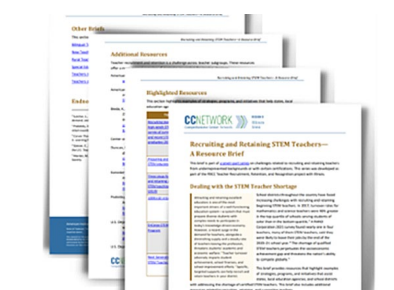
The Regional Educational Laboratory (REL) program has joined LinkedIn! [Follow the REL LinkedIn page](#) to stay up-to-date with the latest REL resources, events, and research.

From the U.S. Department of Education



Resources for supporting student engagement and attendance

School systems nationwide are working to address chronic absenteeism. To support this effort, the Institute of Education Sciences [rounded up research and research-based tools](#) that educators and policymakers can use to improve student attendance and engagement.



Seven briefs on recruiting and retaining diverse and effective teachers

Attracting and keeping excellent educators is a key driver of a well-functioning school system. This [set of briefs](#) from the Region 9 Comprehensive Center highlights strategies for addressing common challenges in recruiting and retaining a diverse and effective teacher workforce.

From the REL webinar archive

Recordings of REL webinars are [available online](#). Check out these featured titles for June:

- [Sense of Belonging: What Every Middle School Educator Needs to Know](#), REL Midwest
- [Using the Teaching Fractions Toolkit to Support Evidence-Based Instruction in 6th Grade](#), REL Midwest
- [Strategies for Gaining Insight into Teacher Well-Being: A Webinar Workshop for School and Change Leaders \(Part 1\)](#), REL Pacific
- [Strategies for Gaining Insight into Teacher Well-Being: A Webinar Workshop for School and Change Leaders \(Part 2\)](#), REL Pacific

REL Midwest in the field



REL Midwest coach Traci Karageorge, from our Supporting Inclusive and Diverse Educator Environments partnership, copresented with the Minnesota Department of Education (MDE) at the **Minnesota Indian Education Association Conference**. *From left:* Govinda Budrow, Fond du Lac Tribal and Community College; Becky Gerdes, MDE; Traci Karageorge, REL Midwest.



REL Midwest staff presented at the **Harvard University Strategic Data Convening** about the Making Equitable Schools Audit partnership and best practices for summarizing data to promote action. *From left:* Melissa Yisak, Jessie Kerr-Vanderslice, Hannah Dunn-Grandpre, and Nora Gannon-Slater.

Contact us

Please contact us for more information about the content in this newsletter or to speak to a member of our staff. We look forward to hearing from you.

REL Midwest
10 S. Riverside Plaza, Suite 600
Chicago, IL 60606



This material was prepared under Contract 91990022C0011 by Regional Educational Laboratory Midwest, administered by the American Institutes for Research. The content does not necessarily reflect the views or policies of Institute of Education Sciences (IES) or the U.S. Department of Education, nor does mention of trade names, commercial products, or organizations imply endorsement by the U.S. Government.