



# Regional Educational Laboratory Northeast & Islands **NEWS**

Serving Connecticut, Maine, Massachusetts, New Hampshire, New York, Puerto Rico, Rhode Island, Vermont, & the U.S. Virgin Islands

## Upcoming Events



### **Raising the Bar for Dyslexia Screening for Multilingual and Bidialectal Learners**

**October 18, 2023: 3:00-4:30, ET**

Join us for a webinar to learn about evidence-based practices for screening multilingual and bidialectal learners who are at risk for dyslexia.

[REGISTER NOW](#)



### **Equity in Career and Technical Education: Research and Practitioner Perspectives**

**October 26, 2023: 3:00-4:00, ET**

This webinar will provide an overview of current research on equitable access to and outcomes for students participating in career and technical education programs.

[REGISTER NOW](#)

## Blog Posts



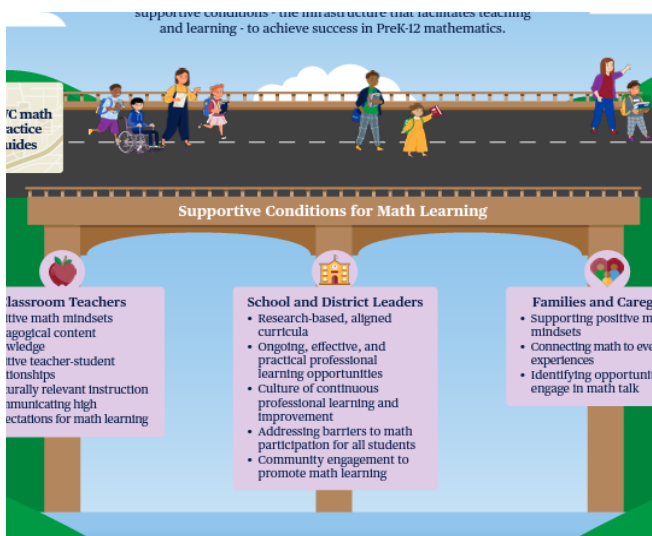
### REL Northeast & Islands' Governing Board Reflects on How to Turn Innovation into Evidence-based Practice

In this blog, our deputy director introduces our Governing Board and discusses innovation in education—the theme for our recent Governing Board meeting.

LEARN MORE

---

## New from Regional Educational Laboratories



### How Educators and Caregivers Can Create Supportive Conditions for Success in PreK-12 Mathematics

This **Cross-REL Working Group** infographic explores why math matters for all learners, shares an overview of what effective math instruction looks like, and includes supportive conditions for math learning.

LEARN MORE

#### Additional REL Resources:

- REL Northwest Blog: [How to Build Positive Relationships with Students](#)
  - REL Appalachia Blog: [Three Ways to Use Equity-Focused Language When Communicating Student Performance Data](#)
  - REL West Infographic: [The Foundation for Education Equity Systems Change](#)
  - REL Midwest Blog: [On the Job: Increasing Student Participation in Immersive Work Based Learning](#)
-

# New from the Institute of Education Sciences



## Equity in Education Dashboards

IES' **National Center for Education Statistics** recently released this website, which compiles key findings and trends on educational equity in the United States from a variety of data sources..

[Learn More](#)

### Additional IES Resources:

- NCES Report: [Report on Indicators of School Crime and Safety: 2022](#)
- NCEE Blog: [The Regional Educational Lab Program: Making a Difference in Educator Recruitment and Retention](#)
- NCES Report: [2019 Homeschooling and Full-Time Virtual Education Rates](#)

The REL Northeast & Islands newsletter features new resources designed to help educators and policymakers use data and research to improve student outcomes.



[Stay Connected](#)



[Visit our Website](#)

*Copyright © 2023 REL Northeast & Islands, All rights reserved.*

Our mailing address is:  
REL Northeast & Islands  
Education Development Center  
300 Fifth Avenue, Suite 2010  
Waltham, MA 02451.

This email was prepared under Contract 91990022C0013 by Regional Educational Laboratory Northeast & Islands, administered by Education Development Center. The content does not necessarily reflect the views or policies of IES or the U.S. Department of Education, nor does mention of trade names, commercial products, or organizations imply endorsement by the U.S. Government.