



# Regional Educational Laboratory Northeast & Islands **NEWS**

Serving Connecticut, Maine, Massachusetts, New Hampshire, New York, Puerto Rico, Rhode Island, Vermont, & the U.S. Virgin Islands

## New Factsheet



### What Is Play-based Learning in Kindergarten? A Resource for Parents and Caregivers

This factsheet highlights the components of a play-based learning approach in kindergarten and provides illustrated examples of how students learn academic and social-emotional skills through play.

[Learn More](#)

### Related Resource:

- Blog: [Prioritizing Play: The Importance of Play-based Learning in Early Education](#)

## New Blog

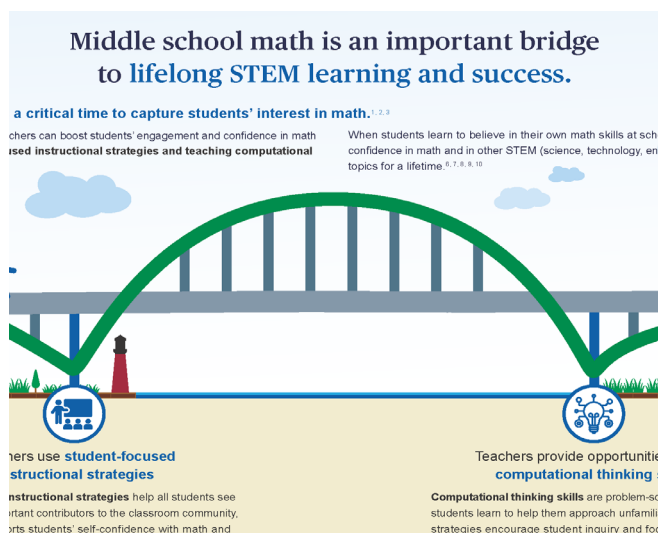


### Success After Graduation: The Importance of Early College and Career Opportunities

Many students are not college- or career-ready out of high school. This blog discusses the benefits of early college and career opportunities and how states in the Northeast & Islands region are providing high school students with access to these opportunities.

[Learn More](#)

## New from the Regional Educational Laboratories



### Middle School Math is an Important Bridge to Lifelong STEM Learning and Success

Middle school is a critical time to capture students' interest in math. This infographic from **REL Midwest** details how middle school math teachers can boost students' engagement and confidence in math.

[Learn More](#)

#### Additional REL Resources:

- REL Mid-Atlantic Blog: [Navigating New Waters: Focusing on Principals' Health and Well-Being](#)
- REL Appalachia Factsheet: [On the Path to Resiliency: How Supportive Community Colleges Address Student Trauma](#)
- REL Northwest Blog: [Addressing Working Conditions in Alaska to Improve Teacher Recruitment & Retention](#)

## New from the Institute of Education Sciences



### New Summary: Assisting Students Struggling with Mathematics—Intervention in the Elementary Grades

This new **WWC practice guide** summary highlights six evidence-based recommendations educators can use when teaching elementary students who are struggling with mathematics.

[Learn More](#)

#### Additional IES Resources:

- NCSEB Blog: [Empowering the Families of Black Autistic Children through Culturally Responsive, Community-Based Interventions](#)
- NCER Blog: [Innovative Approaches to High Quality Assessment of SEL Skills](#)
- NCEE Report: [Federal Support for Attracting, Training, and Retaining Educators: How Districts Receiving Teacher and School Leader Grants Use Their Funds](#)

The REL Northeast & Islands newsletter features new resources designed to help educators and policymakers use data and research to improve student outcomes.



[Stay Connected](#)



[Visit our Website](#)

*Copyright © 2023 REL Northeast & Islands, All rights reserved.*

Our mailing address is:  
REL Northeast & Islands  
Education Development Center  
300 Fifth Avenue, Suite 2010  
Waltham, MA 02451.

This email was prepared under Contract 91990022C0013 by Regional Educational Laboratory Northeast & Islands, administered by Education Development Center. The content does not necessarily reflect the views or policies of IES or the U.S. Department of Education, nor does mention of trade names, commercial products, or organizations imply endorsement by the U.S. Government.