



REL Pacific Newsletter

December 2023, vol. 8



From the Director

Dear Colleagues,

Happy holidays! REL Pacific wishes you, your students, and your families a very merry holiday season and a Happy New Year.

We recently had the pleasure of holding the fall meeting of our governing board in Pohnpei, Federated States of Micronesia (FSM). Eleven board members and five staff members attended the meeting in person, with another 10 board and staff members attending virtually. Over the course of two days, we discussed audience-friendly approaches to sharing our research findings; highlighted new blog posts, infographics, videos, and webinars; heard updates from each jurisdiction; and engaged in a cultural learning activity. Please see photos below from this dynamic, relationship-strengthening meeting.

During this meeting, one topic that sparked a substantial conversation among board members was the usefulness of infographics for helping teachers integrate new ideas, practices, and content into their instruction. Board members specifically mentioned and discussed the Using Instructional Models for Student and Teacher Success [infographic](#), which is highlighted below.

In other news, we're happy to announce REL Pacific's new partnership, the Ala (Pathway) for All Learners in American Samoa. Focused on a locally identified need to increase the use of data to improve teacher retention rates and student learning outcomes, this partnership will work to strengthen a culture of data use and data-informed decision

making among teachers, principals, and system leaders. Our first coaching project kicks off in January, with capacity building sessions for central office staff at the American Samoa Department of Education.

Please don't hesitate to reach out with questions, concerns, or requests for assistance at relpacific@mcrel.org.

Best regards,

Christina Tydeman
REL Pacific Director

REL Pacific Governing Board Meeting – Fall 2023



Photo: Participants of the REL Pacific Governing Board meeting, held November 1–2 at the College of Micronesia-FSM in Palikir, Pohnpei State, FSM.

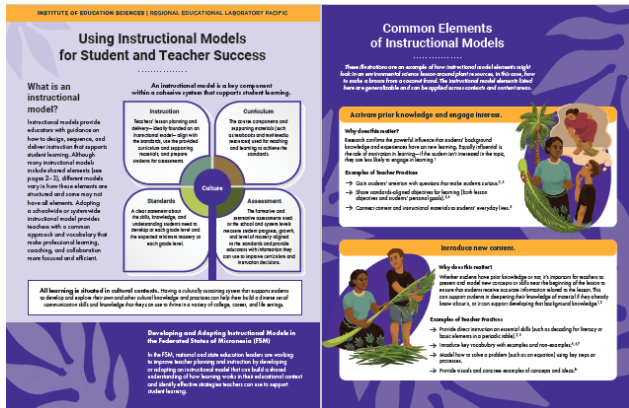


Photo: Governing Board meeting participants with COM-FSM students from the Yap Culture Club.

Infographic: Using Instructional Models for Student and Teacher Success

The governing board's discussion highlighted the usefulness of [this recent REL Pacific infographic](#) that provides an overview of instructional models and how they can help

educators design, sequence, and deliver instruction that supports student learning. The infographic features beautiful illustrations by Tiuladokow Artwork including a palm-frond broom showcasing these steps as an example of how teaching and learning take place both inside and outside the classroom, across many different subjects and activities.



Adopting a schoolwide or systemwide instructional model provides teachers

with a shared approach and professional vocabulary for lesson design and delivery—which makes professional learning, coaching, and collaboration more focused and efficient. This infographic shares a definition of instructional models, common elements across different types of instructional models, and key steps for school and system leaders to select and implement an instructional model.

Resources of Note from the U.S. Department of Education

New School Pulse Panel Data from the U.S. Outlying Areas

The National Center for Education Statistics has released findings from the September 2023 School Pulse Panel (SPP) survey of 98 public schools in American Samoa, the Commonwealth of the Northern Mariana Islands, Guam, and the U.S. Virgin Islands. The data findings cover topics related to summer learning and enrichment programs offered in 2023 and after-school programs being offered during the current 2023/24 school year. All the data can be found on the [School Pulse Panel dashboard](#).

REL Pacific Resources



The REL Pacific blog shares stories and highlights from our partnership work in the region.

Blogs



REL Pacific's peer-reviewed applied research studies showcase original work with education system partners.

Research



REL Pacific resource publications include infographics, fact sheets, videos, and more.

Resources

REL Pacific

745 Fort Street, Ste 1915

Honolulu, Hawai'i 96813

<https://ies.ed.gov/ncee/rel/region/pacific>

relpacific@mcrel.org



Follow [@RELPacific](https://twitter.com/RELPacific) to stay up-to-date on activities and resources from REL Pacific and IES.

This email was prepared under contract number 91990022C0010 by Regional Educational Laboratory Pacific, administered by McREL International. The content does not necessarily reflect the views or policies of IES or the U.S. Department of Education, nor does mention of trade names, commercial products, or organizations imply endorsement by the U.S. Government.