



REL Southeast
Director's Email

July 2023

Greetings from the REL Southeast,

Meet them where they are. It's a phrase we commonly hear from our friends and colleagues in education research,¹ but what does it look like in practice? It's acknowledging student individuality, fostering engagement and inclusivity, addressing learning gaps, supporting equity, and ultimately improving student success. By adjusting school climate and instruction to meet the diverse needs of learners, educators can create an environment that nurtures their full potential.

This month, REL Southeast would like to encourage educators and administrators to explore resources around these issues from the Institute of Education Sciences. We hope you find these materials informative and useful, and as always, thank you for helping to improve educational outcomes for every student in our region.

With gratitude,

Dr. Nicole Patton Terry
Director, REL Southeast

¹ K. Taylor. (2022, October 13). Meeting the Needs of Students in Real World Education Settings. *Inside IES Research*. <https://ies.ed.gov/blogs/research/post/meeting-the-needs-of-students-in-real-world-education-settings>



Cultivating student sense of belonging doesn't just happen; it takes a lot of work

This blog post from [REL Midwest](#) presents an interview with Dr. Orrin Murray centered around the concept of sense of belonging and its connection to school discipline. Murray is a principal researcher at the American Institutes for Research and an expert in equity, culturally responsive practices, and the use of data and learning technologies.

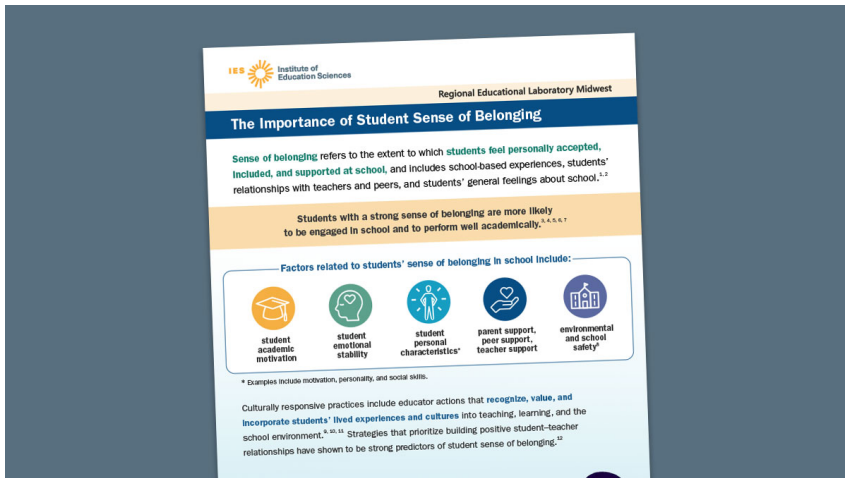
[Click here to read the blog.](#)



Partnering to improve school climate and literacy outcomes in Georgia

This blog post from [REL Southeast](#) provides a description of the School Climate and Literacy for Georgia (SCAL4GA) partnership and offers insight into its foundational pillars and goals. Current and future projects are also detailed.

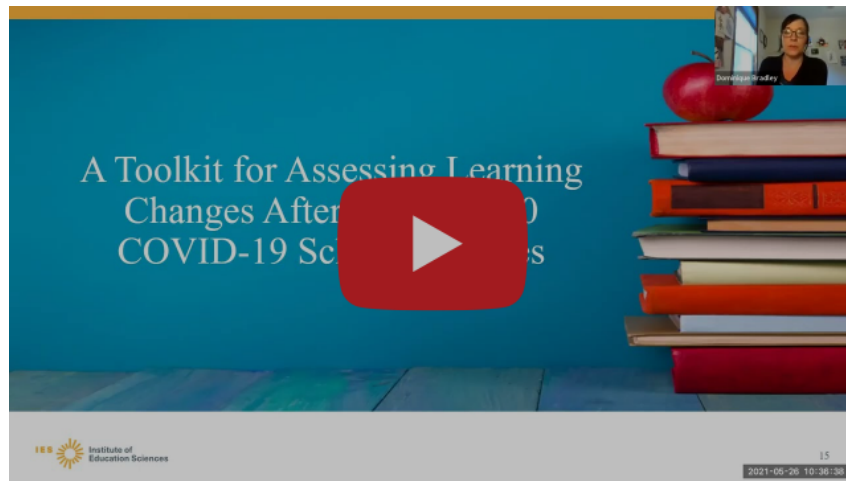
[Click here to read the blog.](#)



The Importance of Student Sense of Belonging

This infographic from [REL Midwest](#) highlights factors related to student sense of belonging and provides culturally responsive educator practices that may support student belonging and engagement.

[Click here to explore the infographic.](#)



Tools You Can Use to Address Student Learning Needs

Tools You Can Use to Address Student Learning Needs

Social and emotional well-being and disrupted learning related to COVID-19 make it imperative that districts choose evidence-based strategies to support students. In this webinar from [REL Southeast](#), experts Dr. Dominique Bradley and Dr. Susan Burkhauser discuss a recent toolkit for assessing learning changes after school closures.

[Click here to view the video.](#)



Strengthening Relationships with Students from Diverse Backgrounds

Strengthening Relationships with Students from Diverse Backgrounds

In this video by [REL Northwest](#), two teachers from North Salem High School, one of the most diverse high schools in Oregon, share successful strategies they have used to connect to students and build authentic relationships.

[Click here to view the video.](#)



Welcoming, Registering, and Supporting Newcomer Students: A Toolkit for Educators of Immigrant and Refugee Students in Secondary Schools

This resource toolkit from [REL Northwest](#) is intended to help educators and other stakeholders identify and use research-based practices, policies, and procedures for welcoming, registering, and supporting newcomer immigrant and refugee students who are attending secondary schools (grades 6-12) in the United States.

[Click here to explore the toolkit.](#)



Want to change how you receive these emails?
You can [update your preferences](#) or [unsubscribe from this list](#)