



REL Southeast
Director's Email

June 2023

Greetings from the REL Southeast,

All workers can benefit from professional development opportunities, and educators are no exception. One form of professional development specific to teachers is instructional coaching, which can enhance teachers' knowledge and skills to positively impact their instruction, leading to improved student learning and outcomes.¹ The coach's role is varied and includes gathering and analyzing data with teachers, listening and asking questions, explaining teaching practices, finding resources, providing feedback, and serving as a thought partner.²

Summer is the perfect time to explore how instructional coaches can support teachers in the upcoming school year. This month, REL Southeast would like to encourage educators and administrators to explore resources around this topic from the Institute of Education Sciences. We hope you find these materials informative and useful, and as always, thank you for helping to improve educational outcomes for every student in our region.

With gratitude,

Dr. Nicole Patton Terry
Director, REL Southeast

¹ Yoon, K. S., Duncan, T., Lee, S. W. Y., Scarloss, B., & Shapley, K. (2007). *Reviewing the evidence on how teacher professional development affects student achievement* (Issues & Answers Report, REL 2007–No. 033). Washington, DC: U.S. Department of Education, Institute of Education Sciences, National Center for Education Evaluation and Regional Assistance, Regional Educational Laboratory Southwest. https://ies.ed.gov/ncee/edlabs/regions/southwest/pdf/REL_2007033.pdf

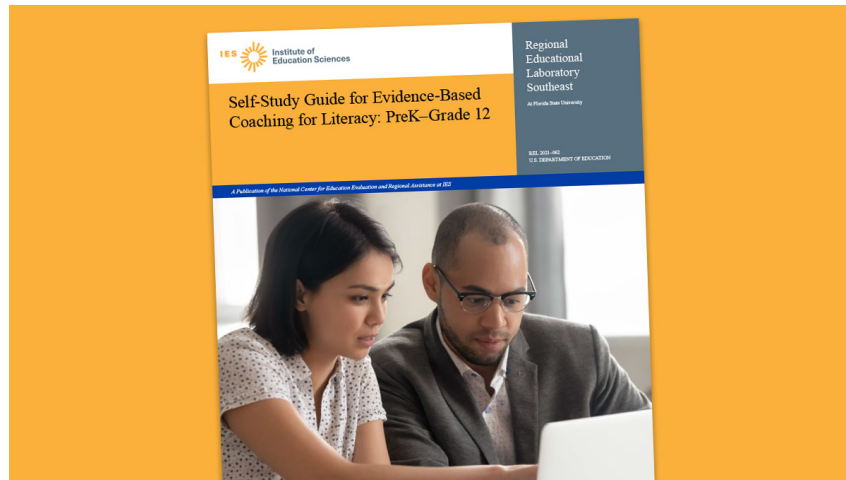
² Knight, J. (2018). *The impact cycle: what instructional coaches should do to foster powerful improvements in teaching*. Thousand Oaks, CA: Corwin.



Improving Literacy in the Florida Panhandle

This blog from [REL Southeast](#) describes the current efforts of the [Florida Panhandle K-5 Literacy Partnership](#) which is focused on improving literacy in north Florida panhandle elementary schools, one of the most rural areas of the state. Many of the participants for these sessions are literacy coaches who are able to support these professional learning efforts back at the school site.

[Click here to read the blog.](#)



Self-Study Guide for Evidence-Based Coaching for Literacy: PreK-Grade 12

This [REL Southeast](#) self-study guide is designed to increase the knowledge, skills, and ability of teachers to implement evidence-based instructional practices by improving the effectiveness of literacy coaching, and is intended to help administrators, teacher leaders, and coaches determine which components of literacy coaching to prioritize based on the data collected.

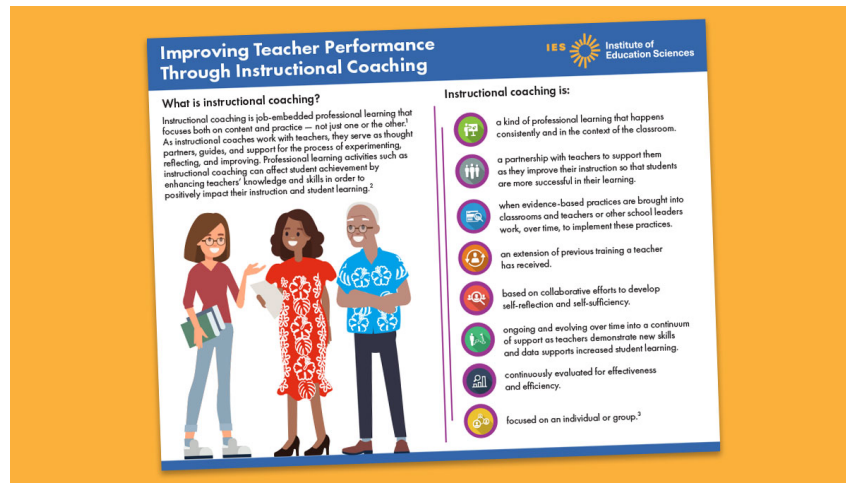
[Click here to view the tool.](#)



Considerations for Planning and Implementing Literacy Coaching

This infographic developed by [REL Southeast](#) presents and describes four specific areas shown from the research to be important when planning for and implementing literacy coaching.

[Click here to view the infographic.](#)



Improving Teacher Performance Through Instructional Coaching

This [REL Pacific](#) infographic provides an overview of how instructional coaching can affect student achievement by enhancing teachers' knowledge and skills.

[Click here to view the infographic.](#)



Want to change how you receive these emails?
You can [update your preferences](#) or [unsubscribe from this list](#)