

West Region Public School State Snapshots (July 2022 Update):

Arizona

Number of
public schools¹

2,357



24% are charter schools²

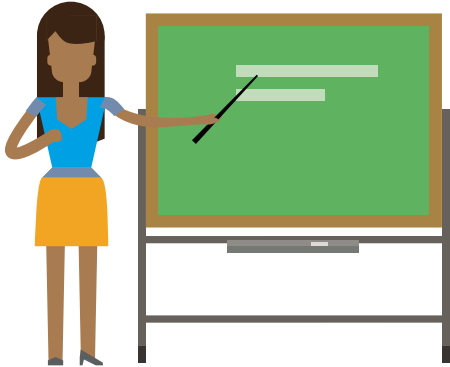


Number of students³

1,111,500

Number of teachers (FTE)⁴

49,547



Students eligible for
**free/reduced
price lunch⁵**

51%



7%

Students attending
school in rural areas⁶

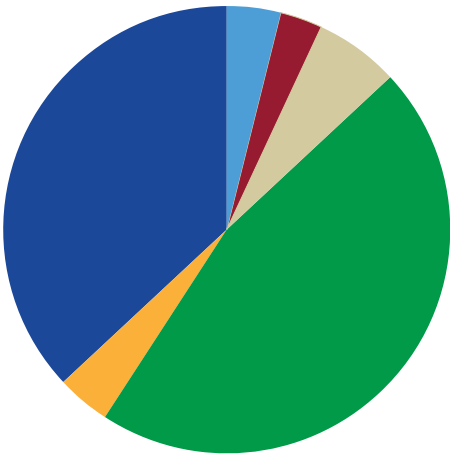


Children ages
6-21 served under
the **Individuals
with Disabilities
Education Act
(IDEA)⁷**

12%

Race/ethnicity
breakdown⁸

AMERICAN INDIAN/ALASKA NATIVE	4%
ASIAN OR ASIAN/PACIFIC ISLANDER	3%
BLACK	6%
HISPANIC	45%
TWO OR MORE RACES	4%
WHITE	36%



English
Learner
students⁹

7%



4-year-olds enrolled
in a **publicly funded
early childhood
education program¹⁰**

16%



78%

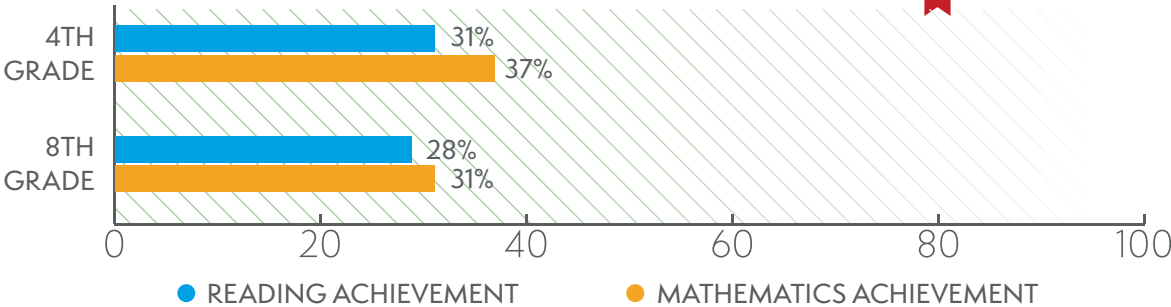
On-time high school
graduation rate¹¹



38%

Percentage of
18- to 24-year-
olds **enrolled in degree-granting
postsecondary institutions¹²**

Students achieving **at or above proficient¹³**



@REL_West

[https://ies.ed.gov/ncee/
rel/region/about/west](https://ies.ed.gov/ncee/rel/region/about/west)

RELWest@WestEd.org

¹ U.S. Department of Education, National Center for Education Statistics, Common Core of Data (CCD), "Local Education Agency (School District) Universe Survey," 2020-21 v.1a; "State Nonfiscal Public Elementary/Secondary Education Survey," 2020-21 v.1a.

² Ibid.

³ Ibid.

⁴ Number of full-time-equivalent (FTE) teachers is the full-time teachers, plus the full-time equivalent of part-time teachers. U.S. Department of Education, National Center for Education Statistics, Common Core of Data (CCD), "Local Education Agency (School District) Universe Survey," 2020-21 v.1a; "State Nonfiscal Public Elementary/Secondary Education Survey," 2020-21 v.1a.

⁵ U.S. Department of Education, National Center for Education Statistics, Common Core of Data (CCD), "Public Elementary/Secondary School Universe Survey," 2019-20.

⁶ U.S. Department of Education, National Center for Education Statistics, Common Core of Data (CCD), "Local Education Agency (School District) Universe Survey," 2020-21 v.1a.

⁷ U.S. Department of Education, ED Facts Data Warehouse (EDW), "IDEA Part B Child Count and Educational Environments Collection," 2020-21.

⁸ U.S. Department of Education, National Center for Education Statistics, Common Core of Data (CCD), "Local Education Agency (School District) Universe Survey," 2020-21 v.1a; "State Nonfiscal Public Elementary/Secondary Education Survey," 2020-21 v.1a.

⁹ National Center for Education Statistics. (2022). English Learners in Public Schools. *Condition of Education*. U.S. Department of Education, Institute of Education Sciences. Retrieved July 13, 2022, from <https://nces.ed.gov/programs/coe/indicator/cgf>.

¹⁰ *The State of Preschool 2021: State Preschool Yearbook*. (2022). New Brunswick, NJ: National Institute for Early Education Research.

¹¹ National Center for Education Statistics. (2022). Public High School Graduation Rates. *Condition of Education*. U.S. Department of Education, Institute of Education Sciences. Retrieved July 13, 2022, from <https://nces.ed.gov/programs/coe/indicator/coi>.

¹² U.S. Department of Commerce, Census Bureau, American Community Survey (ACS), 2018. Most recent data available.

¹³ U.S. Department of Education, Institute of Education Sciences, National Center for Education Statistics, National Assessment of Educational Progress (NAEP), 2019 Reading Assessment and 2019 Mathematics Assessment.

West Region Public School State Snapshots (July 2022 Update):

California

Number of
public schools¹

10,328



13% are charter schools²

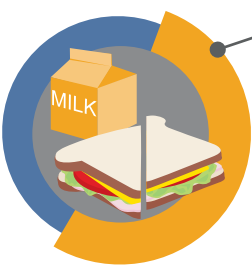
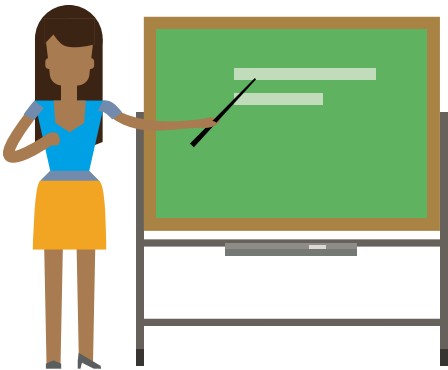


Number of students³

6,064,504

Number of teachers (FTE)⁴

269,850



Students eligible for
free/reduced
price lunch⁵

59%



4%

Students attending
school in rural areas⁶

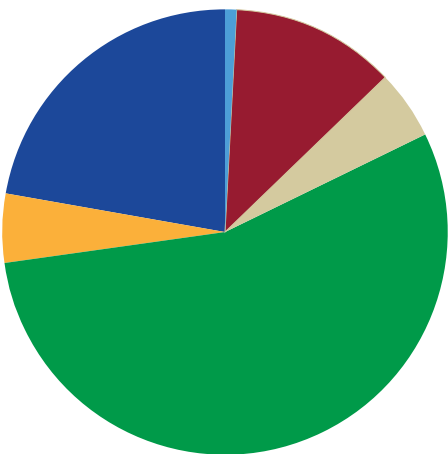


Children ages
6–21 served under
the Individuals
with Disabilities
Education Act
(IDEA)⁷

12%

Race/ethnicity
breakdown⁸

AMERICAN INDIAN/ALASKA NATIVE	<1%
ASIAN OR ASIAN/PACIFIC ISLANDER	12%
BLACK	5%
HISPANIC	55%
TWO OR MORE RACES	5%
WHITE	22%



English
Learner
students⁹

19%



4-year-olds enrolled
in a publicly funded
early childhood
education program¹⁰

37%



85%

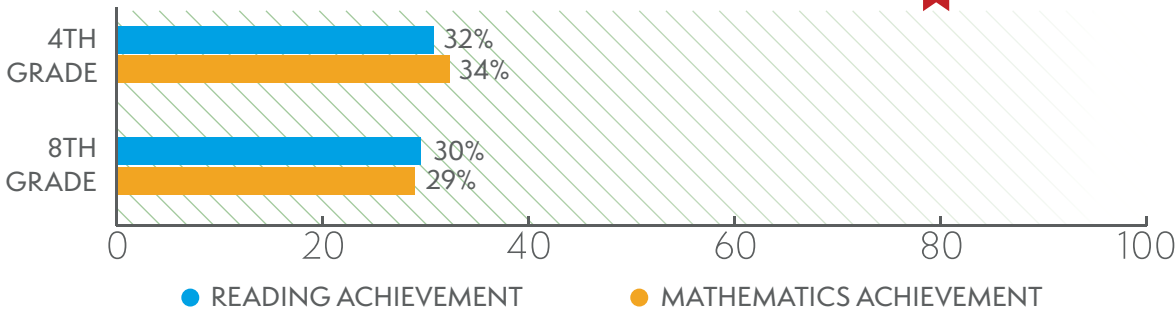
On-time high school
graduation rate¹¹



48%

Percentage of
18- to 24-year-
olds enrolled in degree-granting
postsecondary institutions¹²

Students achieving at or above proficient¹³



@REL_West

[https://ies.ed.gov/ncee/
rel/region/about/west](https://ies.ed.gov/ncee/rel/region/about/west)

RELWest@WestEd.org

¹ U.S. Department of Education, National Center for Education Statistics, Common Core of Data (CCD), "Local Education Agency (School District) Universe Survey," 2020-21 v.1a; "State Nonfiscal Public Elementary/Secondary Education Survey," 2020-21 v.1a.

² Ibid.

³ Ibid.

⁴ Number of full-time-equivalent (FTE) teachers is the full-time teachers, plus the full-time equivalent of part-time teachers. U.S. Department of Education, National Center for Education Statistics, Common Core of Data (CCD), "Local Education Agency (School District) Universe Survey," 2020-21 v.1a; "State Nonfiscal Public Elementary/Secondary Education Survey," 2020-21 v.1a.

⁵ U.S. Department of Education, National Center for Education Statistics, Common Core of Data (CCD), "Public Elementary/Secondary School Universe Survey," 2019-20.

⁶ U.S. Department of Education, National Center for Education Statistics, Common Core of Data (CCD), "Local Education Agency (School District) Universe Survey," 2020-21 v.1a.

⁷ U.S. Department of Education, EDData Data Warehouse (EDW), "IDEA Part B Child Count and Educational Environments Collection," 2020-21.

⁸ U.S. Department of Education, National Center for Education Statistics, Common Core of Data (CCD), "Local Education Agency (School District) Universe Survey," 2020-21 v.1a; "State Nonfiscal Public Elementary/Secondary Education Survey," 2020-21 v.1a.

⁹ National Center for Education Statistics. (2022). English Learners in Public Schools. *Condition of Education*. U.S. Department of Education, Institute of Education Sciences. Retrieved July 13, 2022, from <https://nces.ed.gov/programs/coe/indicator/cgf>.

¹⁰ *The State of Preschool 2021: State Preschool Yearbook*. (2022). New Brunswick, NJ: National Institute for Early Education Research.

¹¹ National Center for Education Statistics. (2022). Public High School Graduation Rates. *Condition of Education*. U.S. Department of Education, Institute of Education Sciences. Retrieved July 13, 2022, from <https://nces.ed.gov/programs/coe/indicator/coi>.

¹² U.S. Department of Commerce, Census Bureau, American Community Survey (ACS), 2018. Most recent data available.

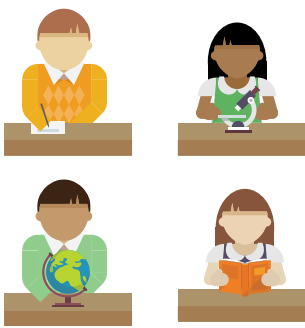
¹³ U.S. Department of Education, Institute of Education Sciences, National Center for Education Statistics, National Assessment of Educational Progress (NAEP), 2019 Reading Assessment and 2019 Mathematics Assessment.

West Region Public School State Snapshots (July 2022 Update): Nevada

Number of
public schools¹ 736

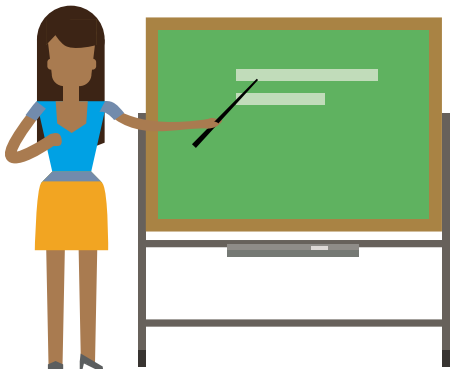


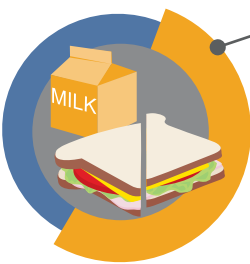
12% are charter schools²




Number of students³
482,348

Number of teachers (FTE)⁴
23,746






Students eligible for
free/reduced
price lunch⁵
65%



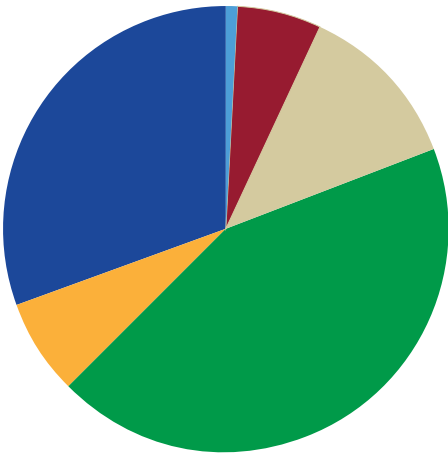
2%
Students attending
school in rural areas⁶



Children ages
6-21 served under
the Individuals
with Disabilities
Education Act
(IDEA)⁷
12%

Race/ethnicity
breakdown⁸

AMERICAN INDIAN/ALASKA NATIVE	1%
ASIAN OR ASIAN/PACIFIC ISLANDER	6%
BLACK	12%
HISPANIC	43%
TWO OR MORE RACES	7%
WHITE	30%



English
Learner
students⁹
15%



4-year-olds enrolled
in a publicly funded
early childhood
education program¹⁰

14%



On-time high school
graduation rate¹¹

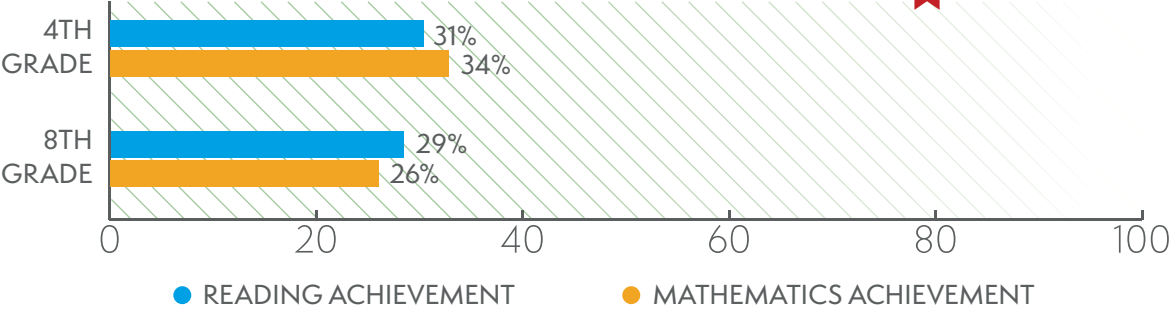
84%



Percentage of
18- to 24-year-
olds enrolled in degree-granting
postsecondary institutions¹²

30%

Students achieving at or above proficient¹³



@REL_West

[https://ies.ed.gov/ncee/
rel/region/about/west](https://ies.ed.gov/ncee/rel/region/about/west)

RELWest@WestEd.org

¹ U.S. Department of Education, National Center for Education Statistics, Common Core of Data (CCD), "Local Education Agency (School District) Universe Survey," 2020-21 v.1a;

² Ibid.

³ Ibid.

⁴ Number of full-time-equivalent (FTE) teachers is the full-time teachers, plus the full-time equivalent of part-time teachers. U.S. Department of Education, National Center for Education Statistics, Common Core of Data (CCD), "Local Education Agency (School District) Universe Survey," 2020-21 v.1a;

⁵ U.S. Department of Education, National Center for Education Statistics, Common Core of Data (CCD), "Public Elementary/Secondary School Universe Survey," 2019-20.

⁶ U.S. Department of Education, National Center for Education Statistics, Common Core of Data (CCD), "Local Education Agency (School District) Universe Survey," 2020-21 v.1a.

⁷ U.S. Department of Education, EDFacts Data Warehouse (EDW), "IDEA Part B Child Count and Educational Environments Collection," 2020-21.

⁸ U.S. Department of Education, National Center for Education Statistics, Common Core of Data (CCD), "Local Education Agency (School District) Universe Survey," 2020-21 v.1a;

⁹ National Center for Education Statistics. (2022). English Learners in Public Schools. *Condition of Education*. U.S. Department of Education, Institute of Education Sciences. Retrieved July 13, 2022, from <https://nces.ed.gov/programs/coe/indicator/cgf>.

¹⁰ *The State of Preschool 2021: State Preschool Yearbook*. (2022). New Brunswick, NJ: National Institute for Early Education Research.

¹¹ National Center for Education Statistics. (2022). Public High School Graduation Rates. *Condition of Education*. U.S. Department of Education, Institute of Education Sciences. Retrieved July 13, 2022, from <https://nces.ed.gov/programs/coe/indicator/coi>.

¹² U.S. Department of Commerce, Census Bureau, American Community Survey (ACS), 2018. Most recent data available.

¹³ U.S. Department of Education, Institute of Education Sciences, National Center for Education Statistics, National Assessment of Educational Progress (NAEP), 2019 Reading Assessment and 2019 Mathematics Assessment.

This product was prepared under Contract 91990022C0003 by Regional Educational Laboratory West, administered by WestEd. The content does not necessarily reflect the views or policies of IES or the U.S. Department of Education, nor does mention of trade names, commercial products, or organizations imply endorsement by the U.S. Government.

West Region Public School State Snapshots (July 2022 Update): Utah

