

# Institute of Education Sciences Funding Opportunities for HBCU-based Researchers

2021 HBCU Research and Innovation Week

# Today's Goal

Help HBCU applicants  
transform **research ideas**  
into **successful** IES  
research grant or research  
training grant proposals

# Motivation

IES has only ever awarded one grant directly to a HBCU, and we want this to change.

# Why would you apply to IES?

You are interested in working in education settings

You are interested in improving student education outcomes

You are committed to sharing your research findings with education practitioners

You are seeking funding

# Agenda

- Introductions
- Overview
- Q&A

# IES Participants

- **Lisa Bridges**, Education Research Analyst, Office of Science
- **Christina Chhin**, STEM Program Officer, National Center for Education Research
- **Erin Higgins**, Cognition and Student Learning Program Officer, National Center for Education Research
- **Meredith Larson**, Adult and Postsecondary Education Program Officer, National Center for Education Research
- **Akilah Nelson**, Special Education Research Program Officer, National Center for Special Education Research
- **Allen Ruby**, Associate Commissioner of Policy and Systems, National Center for Education Research
- **Katina Stapleton**, Co-Chair IES Diversity and Inclusion Council and Education Leadership and Education Research Training Program Officer, National Center for Education Research

**Research can start with an  
idea, interest, or passion**

# Theoma Iruka

PI: Effects of Implicit Bias on Children's Early Outcomes

"I see my research as part of a tapestry that shapes how people see others, especially those who are often made to feel invisible, like young Black boys and girls, their families, and their communities."





# L. Penny Rosenblum

Project Director: AnimalWatch-VI Suite

“I have a congenital visual impairment, so I have had low vision all my life. When I began my undergraduate studies, I quickly realized that I wanted to become a teacher of students with visual impairments (TVI)... The combination of my own experiences as a child and adult with a visual impairment coupled with my experiences teaching children and then preparing TVIs worked together to shape my research agenda.”



**How do you transform your  
idea/interest/passion into a  
successful IES proposal?**

1

**Start your application  
journey by identifying  
your area(s) of interest**

# Charles Martinez

PI: Nuestras Familias (Juntos Project) & Project LEAPS:  
Latino Education After Public School

## Area of Interest:

Positive development and college access and success for Latino students from immigrant families



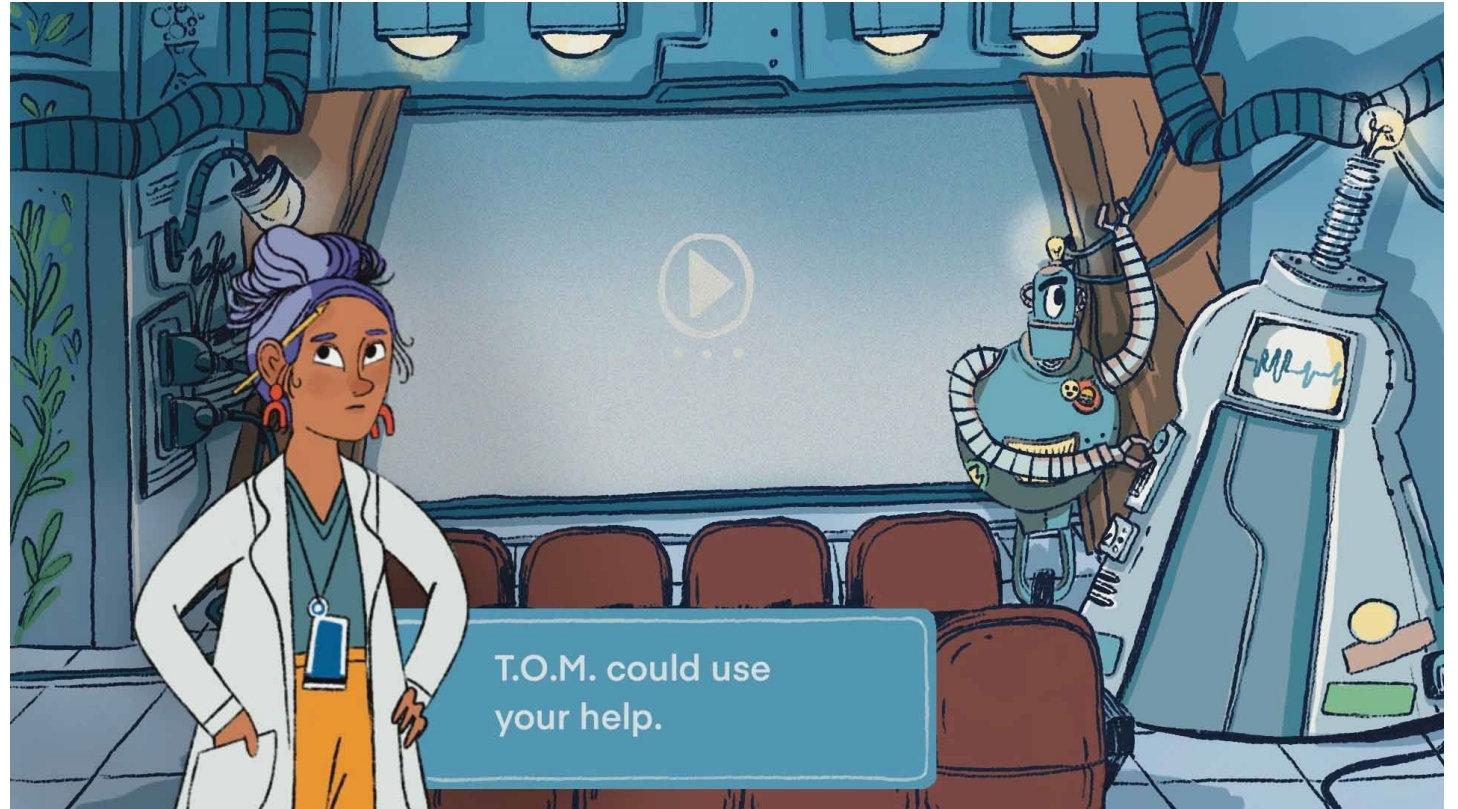
2

**Narrow your area of interest to a more specific research or research training goal**

# Example: Autism Spectrum Disorder

**Purpose:** to help students with Autism Spectrum Disorder (ASD) to infer the mental state of others

**IES-funded Research:** Maithilee Kunda and team are developing an interactive game for students with autism spectrum disorder, called *The Film Detective*, in which the students help a scientist from the year 3021 “decode” how present-day people behave in a series of films



*Film Detective's Theatre and Time Machine Room (illustration by [Kayla Stark](#))*



# Get to know the IES mission, structure, and priorities



## Independent, Relevant, Practical

IES is the nation's premier source for research, evaluation and statistics that can help educators, policymakers and stakeholders improve outcomes for all students.

Welcome to the **Institute of Education Sciences (IES)**, the nation's leading source for rigorous, independent education research, evaluation and statistics.

**NCER**  
National Center for Education Research

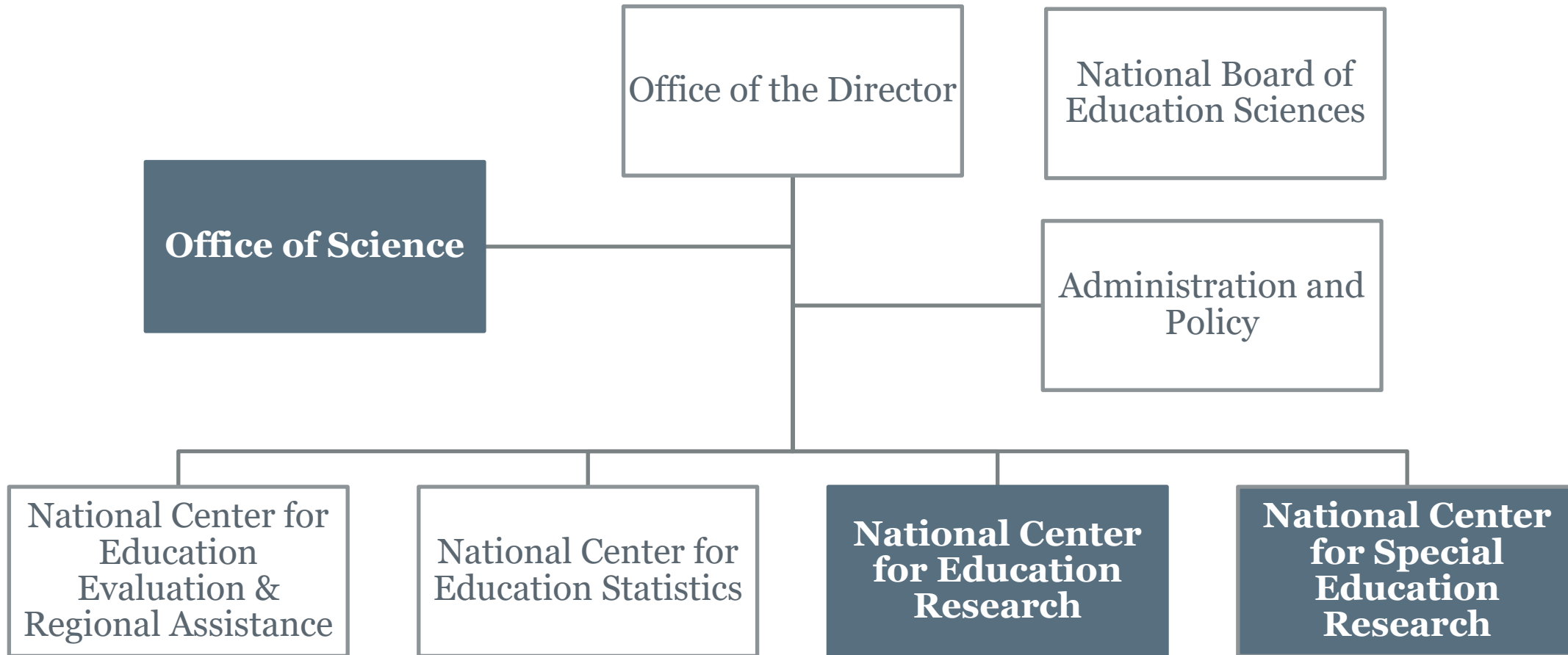
**NCES**  
National Center for Education Statistics

**NCEE**  
National Center for Education Evaluation and Regional Assistance

**NCSER**  
National Center for Special Education Research



# Organizational Structure of IES



# How does IES compare to other agencies?

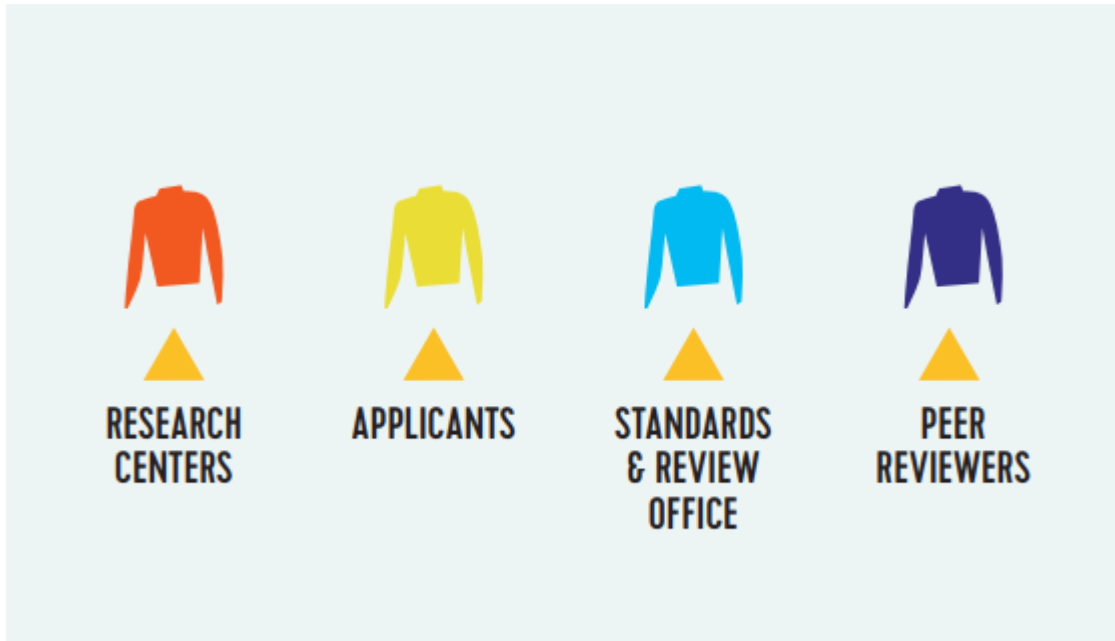
	Institute of Education Sciences (IES)	National Science Foundation (NSF)	National Institutes of Health (NIH)
Information about grants found in	Requests for Applications (RFAs)	RFPs, Dear Colleague Letters	Parent Announcements
Who manages the peer review process?	Office of Science	Program Officers	Center for Scientific Review
Advice provided by program officer?	Yes	Some	Some
How competitive?	Very	Very	Very

# Office of Science

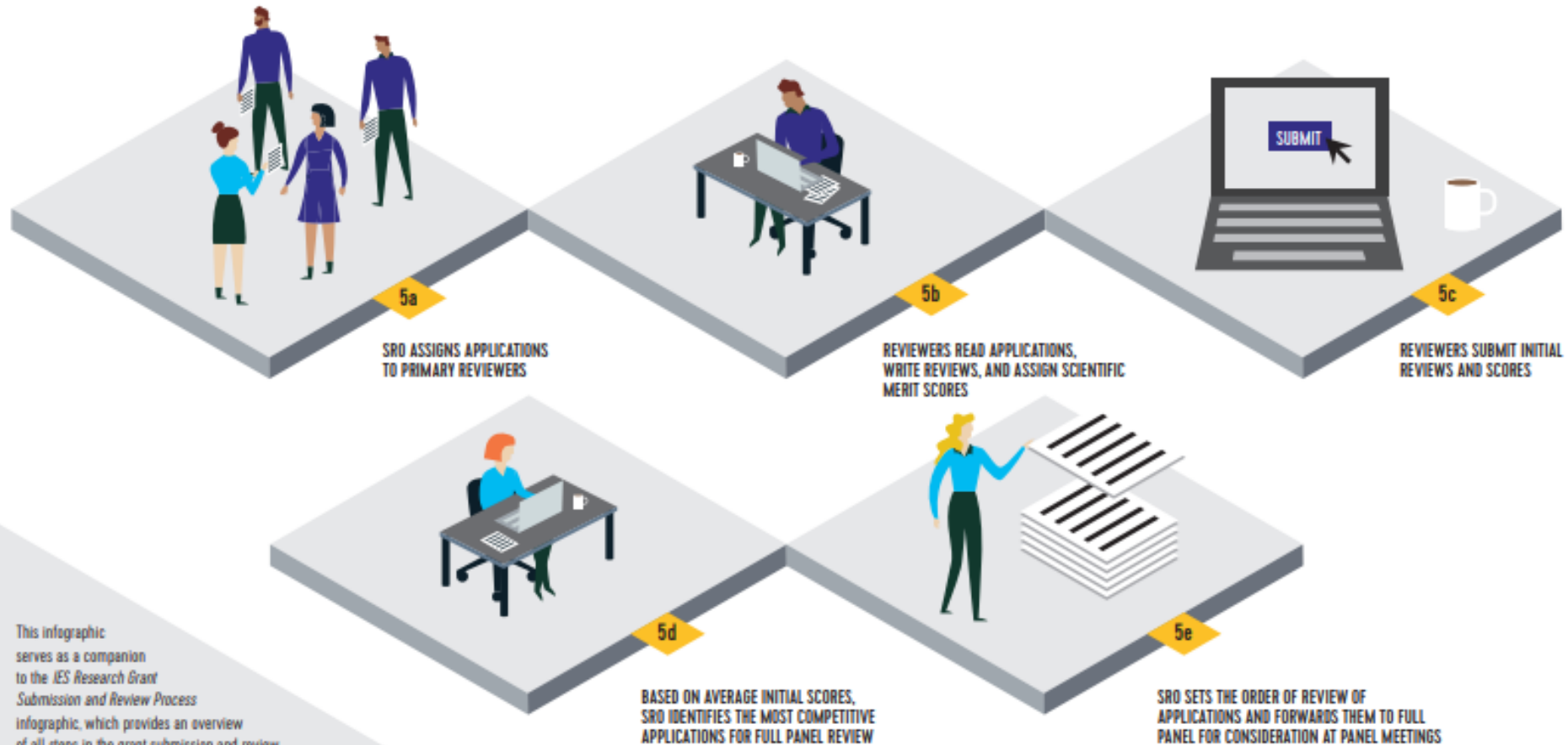
The **Office of Science** oversees the scientific peer review activities for IES grant applications and reports.

- Under the Education Sciences Reform Act (ESRA), IES is required to have a peer review system, involving highly qualified individuals, for reviewing applications for grants and cooperative agreements.
- The Office of Science is separate from the IES centers that fund research grants and contracts, provide technical assistance to applicants, and work with grantees and contractors.
- This organization is intended to allow for an application review process that is as objective as possible.

# IES Research Grant and Research Training Grant Submission and Peer Review Process



# Application Review Detail



This infographic serves as a companion to the *IES Research Grant Submission and Review Process* infographic, which provides an overview of all steps in the grant submission and review process. Thus, the numbering of steps in this infographic relate to placement in the companion infographic.


# Peer Review of Grants

- For more information about the grant peer review process, go to <https://ies.ed.gov/director/sro/index.asp>.
- Individuals interested in serving on grant peer review panels can self-nominate
  - By visiting the Reviewer Recruitment site <https://iesreview.ed.gov/ReviewerRecruitment>
  - By contacting [Elizabeth.Roberts@ed.gov](mailto:Elizabeth.Roberts@ed.gov)

4

**Identify specific IES  
funding opportunities  
that align with your  
interests/goals**

**Start Here:** <https://ies.ed.gov/funding>



## Funding Opportunities at IES

Learn more about current funding opportunities at the Institute of Education Sciences.

The Institute of Education Sciences supports research that addresses important issues in education and develops solutions that improve school readiness and academic achievement for all students. [Learn more.](#)

**Requests  
for  
Applications**

**Deadlines**

**Webinars**

**Virtual  
Office  
Hours**



# Does IES have funding opportunities for HBCUs?

- **General Opportunities:**
  - HBCU applicants are eligible to apply to all IES research and research training competitions
  - HBCUs applicants are encouraged to take advantage of IES technical assistance, including webinars and Virtual Office Hours
- **Targeted Opportunities for MSIs (including HBCUs):**
  - Pathways to the Education Sciences Research Training Program (not competed in FY 22)
  - Early Career Mentoring Program for Faculty at Minority Serving Institutions (new competition launched in FY 22)

# Pathways to the Education Sciences

Training Program grants are awarded to minority-serving institutions (MSIs) and their partners that create education research training programs (eight weeks to 1 year in length) that prepare fellows for doctoral study.

Training participants (known as Pathways fellows) may include upper-level undergraduates (juniors and seniors), post-baccalaureate students (within 5 years of receiving a bachelor's degree), or students enrolled in master's degree programs.

While the formats of the seven funded Pathways programs vary, the core features are an education-related research theme, a required research apprenticeship, methodological knowledge and skills development and career development.



# The Early Career Mentoring Program for Faculty at MSIs

**The Early Career Mentoring Program for Faculty at Minority Serving Institutions** supports the mentoring and stages of their academic careers. Each award will provide an individual Early Career MSI faculty member with support for research (including salary for protected time to conduct research) and career development that includes training under the guidance of an experienced mentor or mentors.

**This program was first competed in FY 2022 and is still in the peer review process.**

# Example: Pathways Research Training

**Purpose:** to motivate and prepare students to pursue careers in education research

**IES-funded Pathways Research Training:** The **RISE Training Program** is a partnership between The University of Maryland, College Park and Bowie State University (HBCU). RISE provides a year-long fellowship to students who receive training in literacy research, conduct research with faculty mentors, and receive assistance in applying to doctoral study.



Shenika Hankerson (PI), William Drakeford (co-PI), Sean Coleman, Megan Stump

# Identify Open IES Funding Opportunities

## EDUCATION RESEARCH AND TRAINING

FY 2022 RFAs will be posted on a rolling basis.

- [Education Research \(84.305A\)](#) **Closed**
- [Research Training Programs in the Education Sciences \(84.305B\)](#) **Closed**
- [Statistical and Research Methodology in Education \(84.305D\)](#) **Closed**
- [Research Grants Focused on Systematic Replication \(84.305R\)](#) **Closed**
- [Using Longitudinal Data to Support State Education Recovery Policymaking \(84.305S\)](#) **Closed**

\* The 84.305B RFA was updated on 7/16/2021 and the 84.305R RFA was updated on 7/22/2021. Please download an updated copy.

- [AI-Driven Digital Platforms to Expand and Accelerate STEM Learning in PreK–12 Settings, Theme 6 Track A of the NSF National Artificial Intelligence Institute Competition](#)

## SPECIAL EDUCATION RESEARCH AND TRAINING

- [Research to Accelerate Pandemic Recovery in Special Education \(84.324X\)](#) **Closed**

Grants awarded through 84.324X will be supported by the American Rescue Plan.

Due to limited Research in Special Education funds available for new awards, NCSER will not release any additional competitions in FY 2022.

- [AI-Augmented Learning for Individuals with Disabilities, Theme 6 Track B of the NSF National Artificial Intelligence Institute Competition](#)

To view the closed FY 2021 RFAs, click on the following links: [Special Education Research \(84.324A\)](#) and [Research Training Programs in Special Education \(84.324B\)](#), [Research Grants Focused on NAEP Process Data for Learners with Disabilities \(84.324P\)](#), and [Research Grants Focused on Systematic Replication \(84.324R\)](#).

## OTHER IES FUNDING OPPORTUNITIES

**Open**

- [Unsolicited Grant Opportunities](#)

**Closed**

- [Small Business Innovation Research](#)
- [State Longitudinal Data Systems](#)

This information can be found at <https://ies.ed.gov/funding>

# Competition Announcements

Requests for applications (RFAs) for most grant competitions are announced in the spring. However, this varies.

SBIR requests for proposals (RFPs) are typically announced in January or February of each year.

Sign up for the IES Newsflash to be notified of new competitions:  
<https://ies.ed.gov/newsflash/>.

# Is my research the right “fit” for IES?

- Is IES interested in funding research on . . . .?
- I use [*..fill in the blank..*] research method. Is this appropriate for an IES research grant?
- I have never received an IES grant before. Will my proposal be competitive?

# Short Answer: Maybe

To answer “**fit**” related questions, we need to know –

1. Is the issue/policy/program/practice you want to study under the control of the education system?
2. What is the “malleable factor” that you want to study?
3. Does your proposed research method match the question you are trying to answer?
4. Does your proposed research method align with the requirements and recommendations of the IES research program or project type?

***This will help us determine whether your proposed research meets the requirements of a specific request for applications.***



# IES Program Officers are your best resource!

Because IES program officers are not involved in the peer review of applications, they can provide in-depth technical assistance and advice throughout the application process. They can help you determine the appropriate competition, discuss your specific ideas, and answer your questions. They can even review drafts of proposals prior to submission!

## ***Best ways to contact program officers:***

- Submit a letter of intent
- Email a program officer
- Attend Virtual Office Hours (<https://ies.ed.gov/funding/technicalassistance.asp>)

# Typical IES Grant Competitions

- **Education Research (84.305A) – Main Competition for NCER**
- **Special Education Research (84.324A) – Main Competition for NCSEER**
- Research Training (84.305B)
- Special Education Research Training (84.324B)
- Education Research and Development Centers (84.305C)
- Statistical and Research Methodology in Education (84.305D)
- Research Networks Focused on Critical Problems of Education Policy and Practice (84.305N)
- Research Grants Focused on NAEP Process Data for Learners (84.305P)
- Research Grants Focused on Systematic Replication (84.305R and 84.325R)
- Using Longitudinal Data to Support State Education Recovery Policymaking (84.305S)
- Transformative Research in the Education Sciences (84.305T)
- Research to Accelerate Pandemic Recovery in Special Education (84.324X)

# Topics within Education Research Grants (84.305A)

1. Improving Education Systems
2. Mathematics and Science Education
3. Postsecondary and Adult Education
4. Reading and Writing
5. Social and Behavioral Context for Academic Learning
6. Cognition and Student Learning
7. Early Learning Programs and Policies
8. Education Leadership
9. Education Technology
10. Effective Teachers and Effective Teaching
11. English Learners

# Topics within Special Education Research Grants (84.324A)

1. Cognition and Student Learning
2. Early Intervention and Early Learning
3. Educators and School-Based Service Providers
4. Families of Children with Disabilities
5. Reading, Writing, and Language
6. Science, Technology, Engineering, and Mathematics (STEM)
7. Social, Emotional, and Behavioral Competence
8. Systems, Policy, and Finance
9. Transition to Postsecondary Education, Career, and/or Independent Living

## **Myth:** IES funds only randomized control trials.

### ***Reality:***

IES funds a range of research, including measurement work, exploratory research, intervention development and testing, and efficacy and replication studies.

We also fund a wide range of methods, including various experimental and quasi-experimental designs and mixed methods that combine quantitative and qualitative methods.

The research design must match the question being asked.

# Research Project Types

- **Measurement**
  - Develop and validate new or modified instruments for use by educators or education researchers
- **Exploration**
  - Identify relationships between individual-, educator-, school-, and policy-level characteristics and meaningful education outcomes, as well as factors that may influence or guide those relationships
- **Development and Innovation**
  - Through an iterative process, develop an innovative intervention (e.g., curriculum, instructional approach, program, or policy) **OR** improve existing education interventions
    - **AND** collect data on its feasibility, usability, and fidelity of implementation in actual education settings
    - **AND** collect pilot data on promise and cost to implement the intervention
- **Initial Efficacy and Follow-Up**
  - Evaluate whether or not a fully developed intervention is efficacious under limited or ideal condition
  - Gather follow-up data examining the longer-term effects of an efficacious intervention

## Example: **Improving Education Systems** Topic, **Exploration** Project Type

**Purpose:** to reduce inequalities such that children from marginalized backgrounds have equal opportunities to fully develop their potential

**IES-funded Project:** What Difference Can Textbooks Make in Achievement Gaps? Exploring Early Exposure to Messages About Gender and Race

### **Methods:**

- The research team is using natural language processing and image analysis to characterize messages about gender and race found in elementary school core subject textbooks.
- They will then use event study design to estimate how changes in these messages lead to differences in educational achievement by race and gender.



**PI:** Anjali Adukia

# Funding for Research Training (Varies)

## Research Training Programs in the Education Sciences (84.305B)

- Early Career Mentoring Program for Faculty at Minority Serving Institutions \*
- Pathways to the Education Sciences Research Training Program \*
- Predoctoral Interdisciplinary Research Training in the Education Sciences
- Postdoctoral Research Training in the Education Sciences
- Methods Training for Education Researchers

## Research Training Programs in Special Education (84.324B)

- Early Career Development and Mentoring
- Methods Training Using Single Case Design
- Postdoctoral Research Training Program in Special Education and Early Intervention

\* Programs requiring minority-serving institutions. See specific RFAs for details.



# Special Funding Opportunity: National Artificial Intelligence (AI) Research Institutes in Partnership with the National Science Foundation

## Broad Goals of the AI Research Institutes:

- Advance research in AI
- Accelerate development of transformational, AI-powered innovation
- Grow a workforce of future AI researchers and practitioners
- Nexus points between universities, federal agencies, industries and nonprofits

IES is providing partial support for **Theme 6: AI-Augmented Learning to Expand Education Opportunities and Improve Outcomes**

# Theme 6 of the National Artificial Intelligence (AI) Research Institutes in Partnership with the National Science Foundation

- **Theme 6, Track A:** AI-Driven Digital Platforms to Expand and Accelerate STEM Learning in PreK-12 Settings
  - Address the Grand Challenge of “Education For All” with a focus on AI-driven learning architectures and digital platforms of the future.
  - Aim to reduce achievement gaps, improve access, and address the needs of all learners.
- **Theme 6, Track B:** AI-Augmented Learning for Individuals with Disabilities
  - Advance AI-driven research and innovations for learners (birth through postsecondary) with or at risk for physical, cognitive, or social and behavioral disabilities.
  - Transform identification, assessment, and support for these learners.
  - Proposal must discuss how the work will respond to the needs of learners with or at risk for a disability in an area where the COVID-19 pandemic has further widened existing gaps.

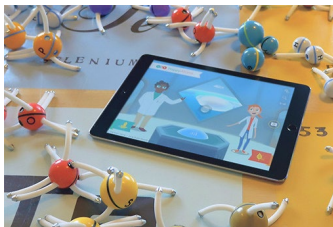
# NSF AI Research Institutes Competition Timeline

Milestone	Program-wide timeline
Solicitation release/ Webinar	Oct 8, 2021 Nov 16, 2021
Preliminary proposals due	Jan 14, 2022
Results of preliminary proposal review	Mid-Feb 2022
Full proposals due	May 13, 2022
Schedule Reverse Site Visits*	Oct 10-28, 2022
Reverse Site Visits*	Nov 28-Dec 22, 2022
Anticipated start date of awards*	Jun 1, 2023

\* Proposers to Theme 6 Track B can anticipate earlier milestones for these steps.

**\* Visit the competition page for more details:**  
<https://beta.nsf.gov/funding/opportunities/national-artificial-intelligence-research-institutes>

# ED/IES Small Business Innovation Research Program



Through its one annual competition, ED/IES SBIR provides up to \$1.25M to for-profit firms and research partners for the R&D, pilot testing, and evaluation of new commercially viable education technology products for students, educators, or administrators in regular or special education.

**Two FY 2022 solicitations will be released around December 1 –**

- Phase I awards for up to \$250K for 8 months the development of a prototype of an education technology product
- Direct to Phase II awards for up to \$1M for 2 years to ready existing evidence-based research for use at scale.

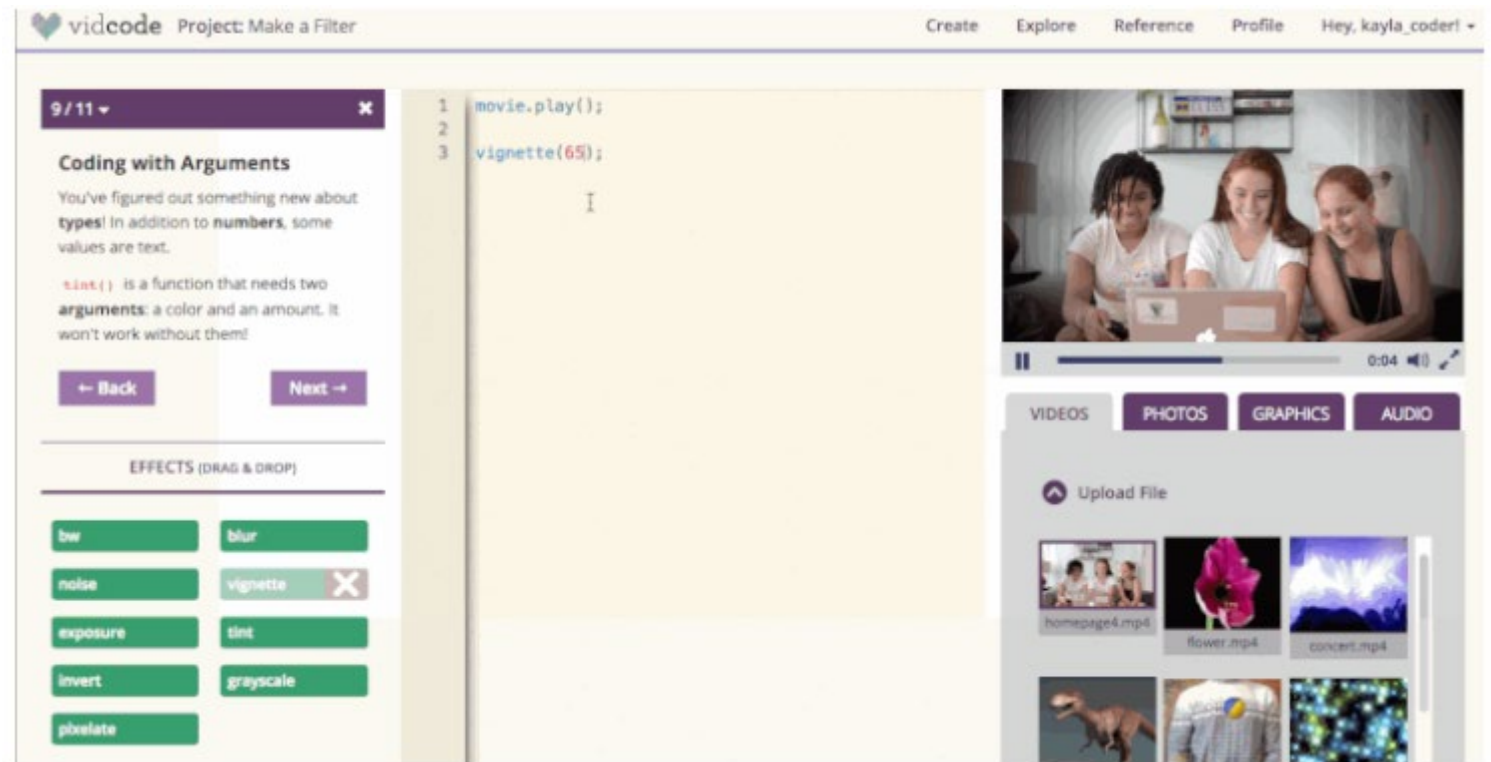
For more information, visit <https://ies.ed.gov/sbir/solicitations.asp>

# Example: SBIR Phase I & II

**Purpose:** To develop a teacher Dashboard to support grade-school teachers in implementing VidCode, a website where students learn to code

## IES-funded Projects:

- Teacher Dashboard 2.0 for Learning Creative Computer Programming (SBIR Phase I)
- Teacher Dashboard and Student Feedback Tools (SBIR Phase II)



PI: Alexandra Diracles

5

**Apply for Funding!**

## STEPS TO APPLYING FOR IES GRANTS

1. **Identify** a current funding opportunity that matches your research interests and identify the relevant [letter of intent and application deadlines](#) and **sign up** for IES [newsflashes](#) to stay informed.
2. **View** a [funding opportunities webinar](#) to learn more about the application process and choosing an appropriate funding opportunity and **attend** our [virtual office hour](#) sessions for general, group discussions.
3. **Download** the [Application Submission Guide](#), as well as the appropriate [Request for Applications](#) and [application package](#) (Search for CFDA 84.305 or CFDA 84.324).
4. **Submit** your [Letter of Intent](#) (optional but strongly encouraged).
5. **Register** (or update) your organization on [Grants.gov](#) and [SAM.gov](#).
6. **Submit** your application to [Grants.gov](#) before the application [deadline](#).

**Myth:** IES doesn't support course buyout or summer salary.

*Reality:* IES supports grant personnel time to carry out research related activities. This can include course buyout and summer salary. Principal investigators on grants coordinate their budget planning with sponsored projects officers to ensure that their budgets comply with institutional guidelines as well as federal guidelines.



# Keep in Touch with IES

[NCER.Commissioner@ed.gov](mailto:NCER.Commissioner@ed.gov)  
or [NCSER.Commissioner@ed.gov](mailto:NCSER.Commissioner@ed.gov)

to connect to POs or technical assistance –  
[IESVirtualTA@ed.gov](mailto:IESVirtualTA@ed.gov)

[IES.ED.GOV/Funding](https://ies.ed.gov/Funding)

# Any Questions?