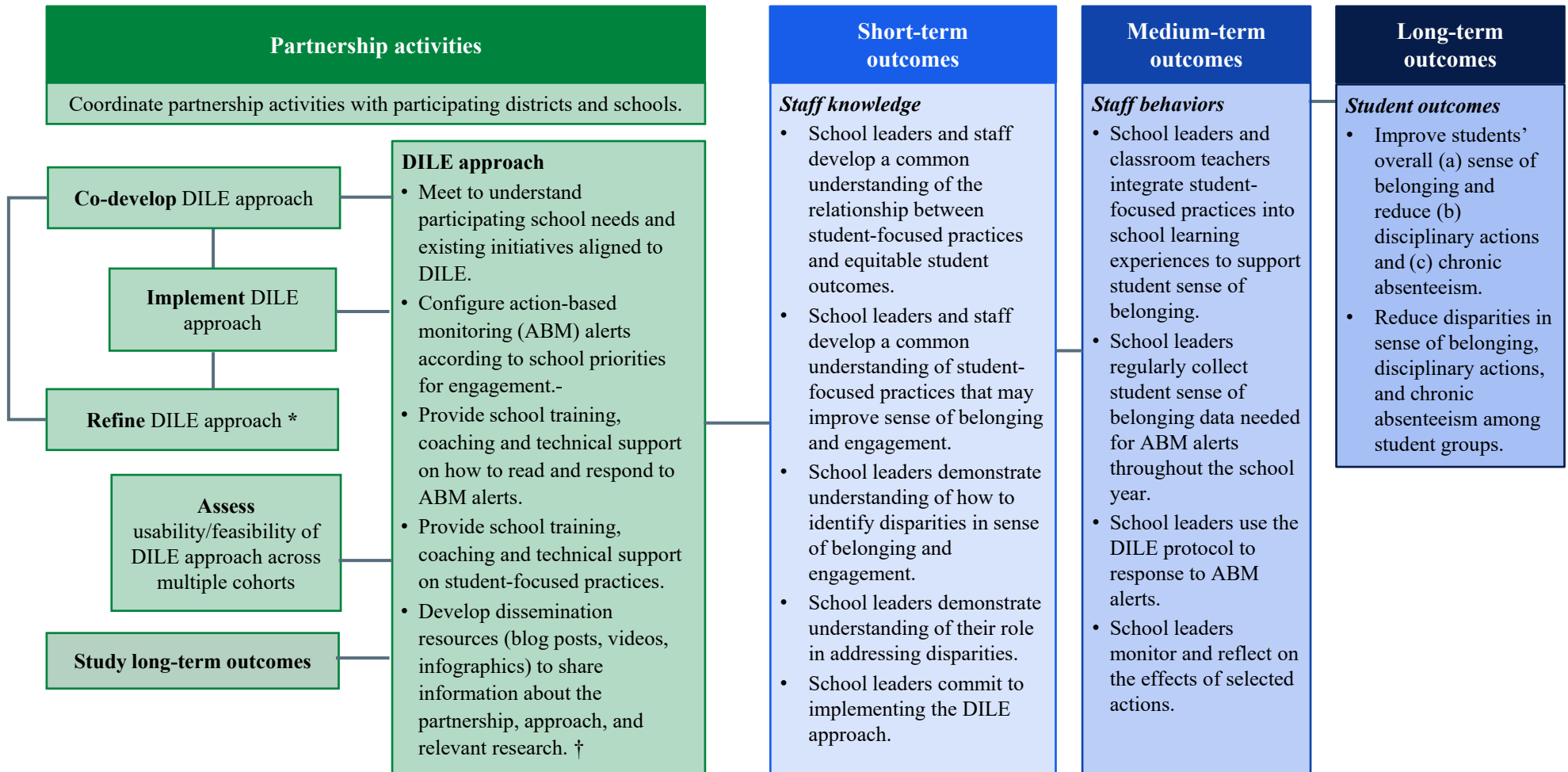


Data-Informed Leadership for Equity Partnership

Regional Educational Laboratory (REL) Midwest is partnering with multiple districts in Iowa to build school leader capacity in using data to reduce disparities in sense of belonging, disciplinary actions, and absenteeism among student groups in middle school. To achieve this goal, the Data-Informed Leadership for Equity (DILE) partnership will develop, test, and refine an approach that will incorporate professional learning in student-focused practices as well as training and tools specifically designed to support the use of data to act upon disparities in student experiences and outcomes.



Notes:

* REL Midwest employs an iterative research and development model, across several cohorts, in the development and refinement work.

† Dissemination materials are designed to support acceptability and feasibility of the approach.