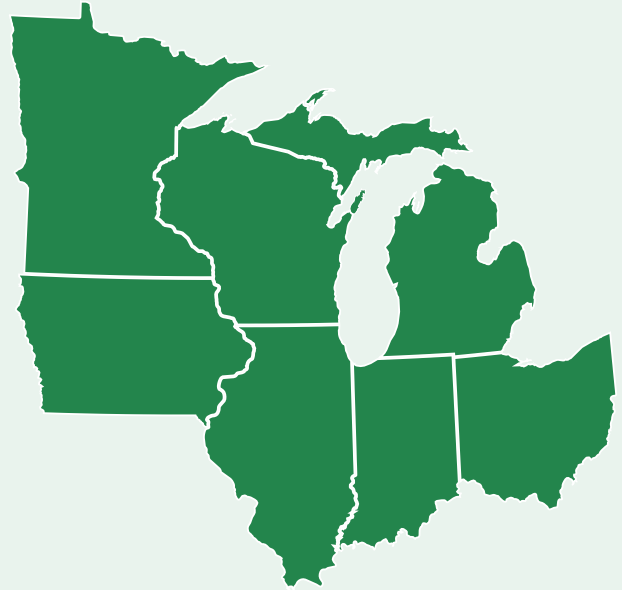


Regional Educational Laboratory Midwest partners with educators in the Midwest to improve student outcomes.

[Regional Educational Laboratory \(REL\) Midwest](#) is part of a network of 10 regional educational laboratories funded by the Institute of Education Sciences (IES), the research arm of the U.S. Department of Education.

REL Midwest works with educators in **Illinois, Indiana, Iowa, Michigan, Minnesota, Ohio, and Wisconsin** to support the use of evidence and data to improve student outcomes. In particular, REL Midwest seeks to address priorities related to the needs and outcomes of **students who are farthest from opportunity**.



Serving as a change agent for educators in the Midwest

REL Midwest conducts its work through research partnerships with key organizations, groups, and individuals who influence education policy and practice:



State education agencies



Regional education service centers



School districts



School boards



Colleges and universities



Student, family, and community groups

These research partnerships engage in the following activities:



Training, coaching, and technical support to facilitate changes in practice or programming.



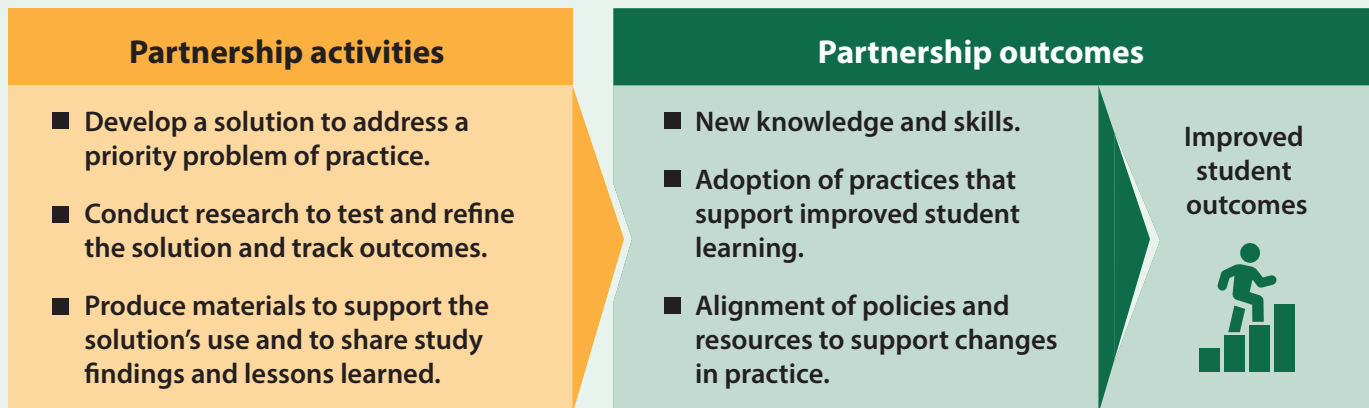
Communication and dissemination to share research and evidence-based practices and support changes in practice and programming.



Applied research to test and refine solutions to priority problems of practice.

REL Midwest's research partnerships

REL Midwest is partnering with local and state education agencies in the seven states we serve to **develop, test, and refine solutions** to high-leverage problems that align with state priorities.



Teaching Fractions Toolkit: Supporting Illinois teachers in addressing gaps in students' mathematics achievement with a focus on fractions. The partnership will draw on a What Works Clearinghouse practice guide to develop an educator toolkit.



Employability Skills Partnership: Partnering with Indiana school districts to strengthen high-quality career pathways and programs of study at the secondary level, with a focus on increasing student participation in immersive work-based learning.



Data-Informed Leadership for Equity: Supporting Iowa middle school leaders in using data and culturally responsive practices with the goal of reducing racial/ethnic disparities in students' sense of belonging, discipline referrals, and absenteeism.



Strategies to Improve Reading: Supporting Michigan educators and school leaders in integrating evidence-based strategies and culturally responsive practices into K-1 literacy instruction, with a focus on phonological awareness and phonics.



Supporting Inclusive and Diverse Educator Environments: Supporting Minnesota school leaders in promoting favorable working conditions and in retaining teachers of color and Indigenous teachers.



Making Equitable Schools Audit: Supporting Ohio high schools in identifying policies and practices misaligned with the needs of students of color and students receiving special education services as a way to improve school climates and reduce disparities in discipline referrals.



Engagement and Achievement through Computational Thinking: Supporting Wisconsin grade 6 teachers in integrating computational thinking and culturally responsive practices into mathematics instruction, with the aim of improving students' mathematics engagement and achievement.

Contact Us



relmidwest@air.org



[@RELMidwest](https://twitter.com/RELMidwest)



ies.ed.gov/ncee/rel/region/midwest

This document was prepared under Contract 91990022C0011 by Regional Educational Laboratory Midwest, administered by the American Institutes for Research. The content does not necessarily reflect the views or policies of the Institute of Education Sciences or the U.S. Department of Education, nor does mention of trade names, commercial products, or organizations imply endorsement by the U.S. Government.